

SiC Cascode JFET & Module User Guide

UM70114/D

SCOPE

This SiC JFET & Module user guide presents practical solutions and guidelines for fast switching SiC devices. The solution is verified by experimental double pulse tests (DPT) results. The snubber loss is precisely measured to assist users in computing the power rating of the snubber resistor and is much lower than traditional estimation using CV^2 . The beneficial impact of the snubber is analyzed for both hard-switching and soft-switching applications in application note “[Switching Fast SiC Cascode JFETs with a Snubber](#)”.

PRODUCT FAMILY INTRODUCTION

SiC power semiconductor can greatly improve power density, efficiency, and cost-effectiveness for overall system design compared to Si devices. The core advantages of SiC are high voltage blocking capability, low conduction loss, low switching loss, and high thermal conductivity. All these advantages combined enable power density enhancement from two factors. First, to increase power density the loss of a system must be reduced to handle the increased concentration of heat. The low conduction loss and low

switching loss of SiC JFET help to achieve this goal. Second, lower switching loss allows higher switching frequency which enables smaller size of passive components such as capacitors and inductors for a system with a given power level. Thanks to all these advantages, SiC power devices have been accelerating efficiency and performance improvements in many industrial and automotive applications such as server power supplies, energy storage systems, EV motor drives and charging equipment, etc.

onsemi Gen3 vs. Gen4

onsemi SiC JFET is a cascode structure device consists of a high-voltage SiC JFET and a low-voltage Si MOSFET (LVMOS). onsemi SiC JFET has many advantages such as super low $R_{DS(on)}$, super low output capacitance, etc. A cascode structure is needed to make SiC JFET a normally-off device. Gen3 products use planar technology. Gen4 products use trench technology which pushes performance to the next level.

Please see this link for more information on [onsemi SiC Cascode JFET](#) products.

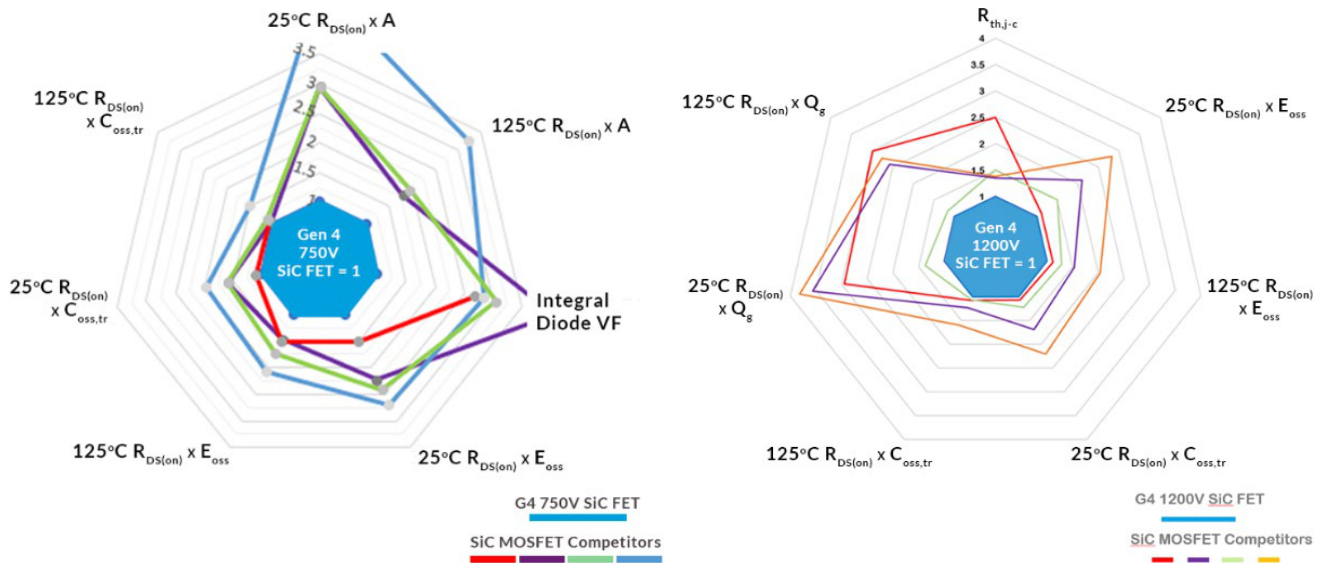


Figure 1. Figures of Merit Parameters Normalized to Gen 4 SiC JFETs (750 V is on the Left, 1200 V is on the Right)

Table 1.

Gen 4 750 V Key Features	Gen 4 1200 V Key Features
750 V VDS rating vs 650 V VDS rating from other vendors	1200 V VDS rating
Low $R_{DS(ON)}$ from 5.4 m Ω to 60 m Ω	Low $R_{DS(ON)}$ from 23 m Ω to 70 m Ω
Best-in-class figure of merit	Best-in-class figure of merit
Flexible gate drive voltage from 12 V to 18 V with 5 V threshold	Flexible gate drive voltage from 12 V to 18 V with 5 V threshold
Wide package options: TO-247-3L/4L, TOLL, D2PAK-7L	Wide package options: TO-247-3L/4L, TOLL, D2PAK-7L
Especially advantageous for ZVS soft-switching applications	Especially advantageous for ZVS soft-switching applications
5 μ s short-circuit withstand time for 6 m Ω device	

UJ, UF, UG, C/SC, E1B Module

UJ series UJ series has slower switching speed which is good for replacing existing non-kelvin package designs like TO247-3L, D2PAK3L, etc.

UF series UF series has faster switching speed which is good for high switching frequency, high efficiency, and high-power density applications. It is recommended to use kelvin package designs like TO247-4L, D2PAK7L, MO-229 (TOLL), etc. to fully exploit the fast-switching speed of UF series. Device snubber is strongly recommended for UF series non-kelvin packages, TO247-3L, D2PAK3L, etc.

UG series has two gate pins (one for SiC JFET, one for Si MOSFET). The SiC JFET gate pin allows very wide controllability of switching speed. UG series target applications with very high currents and relatively slow dv/dt (<20 V/ns) like circuit protection, etc. UG series are easy to parallel even in discrete packages. For more details, please see [4].

C/SC means side-by-side cascode or stacked cascode. Letter “C” means that the cascode structure has a Si low voltage MOSFET and SiC high voltage JFET packaged side-by-side. Letter “SC” means that the cascode structure has a Si low voltage MOSFET die attached on top of the SiC high voltage JFET die, thus called stacked die. Stacked die has 2X power cycling lifetime comparing to SiC MOSFET.

E1B modules provide **onsemi** SiC benefits (low $R_{DS(ON)}$, low switching loss, low thermal resistance junction to case, etc.) in an industry standard module package. E1B package is pin compatible to many vendors. **onsemi**’s first 1200 V E1B modules are extremely efficient for ZVS (zero-voltage switching) soft-switching applications like phase-shifted full-bridge, LLC, etc. Please refer to E1B module [mounting guidelines](#) and [technical overview](#) documents for detailed information.

SNUBBERS ACHIEVE HIGH EFFICIENCY AND SMOOTH WAVEFORMS

onsemi strongly recommends using snubbers (device snubber and bus snubber) with low R_g to control switching speed of SiC JFETs.

- First, using bus snubber (decoupling cap) can greatly reduce power commutation loop stray inductance. This means less voltage overshoot peak (drain-to-source) and ringing duration at a faster switching speed, thus balancing high efficiency and EMI.
- Second, using device drain-to-source snubber capacitor enables significant reduction in turn-off switching loss for inductive load hard turn-off switching, especially for ZVS soft-switching where drain-to-source snubber capacitor energy is recycled for turn-on.
- Third, **onsemi** SiC JFETs have very small gate-to-drain stray capacitance (C_{gd}) which is preferable for fast switching and improved immunity to false-trigger by fast dv/dt. However, it also makes external gate drive R_g less effective in switching speed control.
- Fourth, using snubber reduces delay time as lower R_g values can be used to achieve same overshoot with faster dv/dt speed.

For more details on snubber benefits please refer to [1].

Example Waveforms with/without Snubber

Figure 2 shows the improvement of V_{DS} and V_{GS} waveform of the fast switching SiC device (UF3C120040K3S, TO247-3L) at inductive load hard turn-off with and without the drain-to-source RC snubber. The V_{DS} spike and ringing duration is greatly reduced.

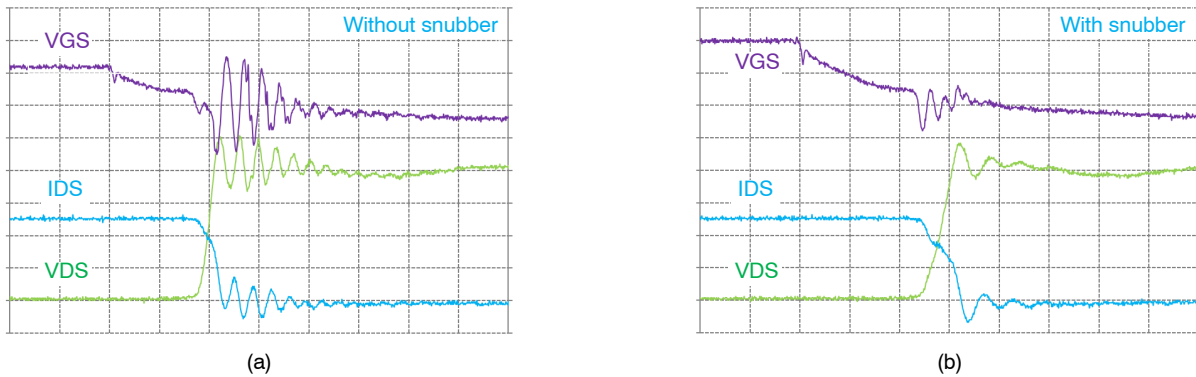


Figure 2. UF3C120040K3S Turn-off Waveforms without Drain-to-source Snubber (a), with Drain-to-source Snubber (b), at VDS 800V, ID 50 A, VGS -5 V, Rgoff 33 Ω. Drain Current (IDS) (20 A/div), VGS (10 V/div), VDS (200 V/div), Time Scale 40 ns/div.

Snubber Configuration

A typical RC snubber configuration in a half-bridge is shown in Figure 3 for hard-switching and ZVS soft-switching applications.

Bus snubber consists of decoupling capacitor (Cd) and resistor (Rd) between the fast-switching half-bridge and DC LINK bulk capacitor.

Device snubber consists of high voltage small footprint capacitor (Cs) and resistor (Rs) across device drain and source terminals.

Load inductor (L) represents inductive load. The DC LINK capacitor has high capacitance to maintain DC bus voltage while providing energy to the load inductor L. Cd is the power loop decoupling capacitor, usually a ceramic capacitor. It is located very close to the half-bridge to minimize power loop stray inductance for switching transients. CT is a current transformer for current measurement.

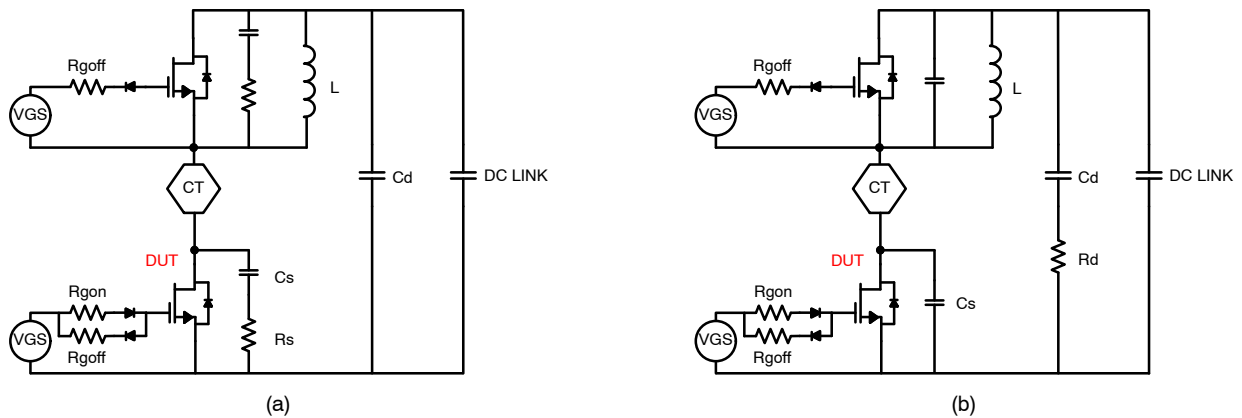


Figure 3. DPT Schematic with RC Snubbers on Both Switches for Hard-switching (a) and ZVS Soft-switching (b)

For hard-switching the device snubber resistor Rs is placed near device drain-to-source to provide best damping effects.

For ZVS soft-switching the device snubber has no resistor Rs in series to avoid Rs energy loss at ZVS turn-on during each soft-switching cycle. Instead, the damping effect is realized by bus snubber resistor Rd which is also series connected in the power loop.

Rs and Rd does generate heat. Although Rs experience loss due to charging and discharging of Cs at every switching cycle, Rs loss is much lower than CV² estimation. With sufficient Rd value to provide strong damping effect the Rd loss is dominated by stray inductance energy (0.5LI²) between Cd and DC LINK bulk capacitor. Therefore, Rd loss is layout dependent.

In practice, Cs is key to ensure VDS spike and switching dv/dt are under control at high switching current. For the balance between damping of VDS ringing and snubber resistor loss (Rd and Rs) it is better evaluated by experiment. We strongly recommend designers to measure snubber resistor loss (Rs and Rs) and temperature during the design stage.

To ease thermal dissipation, two SMD resistors can be used in parallel. Also, wide PCB traces or planes are recommended for snubber Rs and Rd terminals for better heat dissipation. In half-bridge, for example, the low side device Rs has access to large GND plane for thermal dissipation while the high side device Rs has access to large DC+ plane for thermal dissipation.

Avoid Long-lead

Long device leads introduce more power loop stray inductance creating more ringing and voltage spikes on device GS and DS terminals. This effect is more prominent for UF series with non-kelvin packages (with common source inductance). If long lead is required due to mechanical limits, more device snubber capacitance and higher Rg is required to slow down switching speed to control the ringing and voltage spikes. Therefore, long lead has a significant negative impact on efficiency and waveform.



Figure 4. Long Lead (Left) vs. Short Lead (Right). Short Lead is Recommended Whenever Possible.

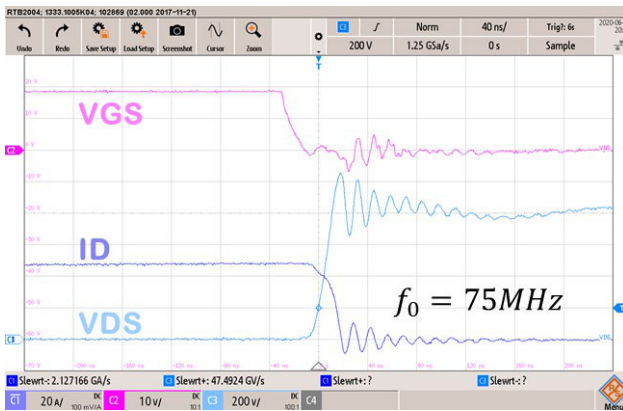
SNUBBER DESIGN GUIDES

This SiC JFET & module user guide presents practical solutions and guidelines for using RC snubbers with fast switching SiC devices. The solution is verified by experimental double pulse tests (DPT) results. The snubber loss is precisely measured to assist users in computing the power rating of the snubber resistor. The beneficial impact

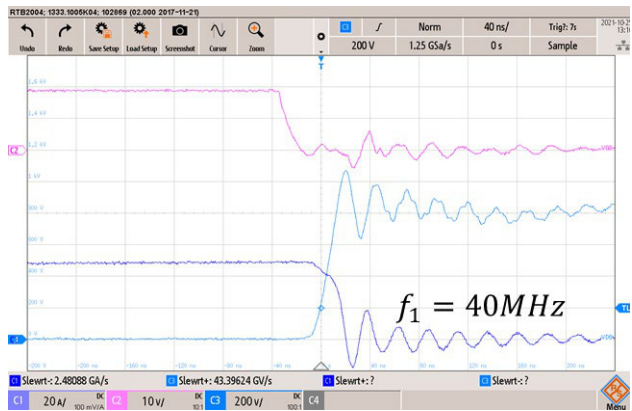
of the snubber is analyzed for both hard switching and soft switching applications. More details can be found in application note entitled “[Switching Fast SiC Cascode JFETs with a Snubber](#)”.

Table 2. DEVICE SNUBBER (DRAIN-TO-SOURCE) DESIGN 7 STEPS [6]

7 Steps to Calculate an RC Snubber	
Step 1	Measure the VDS turn-off oscillation frequency (f_0). See Figure 1.
Step 2	Add a capacitor (C_1) to device drain-to-source and measure the new shifted oscillation frequency (f_1). Recommendation for a starting value of C_1 is 1–3 times of device energy related output capacitance, $C_{oss(er)}$, at a specified bus voltage. In an example of UF3C120040K4S, the SiC MOSFET $C_{oss(er)}$ at 800 V bus is 112 pF. C_1 of 300 pF is used to have sufficient frequency shift. See Figure 5.
Step 3	Calculate the frequency ratio: $m = f_0 / f_1$
Step 4	Calculate the circuit parasitic capacitance: $C_0 = C_1 / (m^2 - 1)$
Step 5	Calculate the power loop parasitic inductance: $L = 1 / [(2\pi f_0)^2 \times C_0]$
Step 6	Calculate the starting snubber capacitor value: $C_1 = 2 \times C_0$
Step 7	Calculate the starting snubber resistor value: $R = \sqrt{L / (C_0 + C_1)}$



(a)



(b)

Figure 5. Device Snubber (Drain-to-source) Design Step 1 (Left) and Step 2 (Right)

Guidelines for Single-gate FETs

NOTE:

1. Coss(er) is energy related effective output capacitance in datasheet.
2. Device snubber resistor should not be too large, we recommend no more than 5 Ohm.
3. The given value of device snubber for each device provided by the following table is a starting point of evaluation. The optimal value is system dependent and should be verified by experiment in target application.

Table 3.

Snubber Rule	Gen3 3-Lead	Gen3 4-Lead
Cs	3x Coss(er)	2x Coss(er)
Rs (Ω)	1 to 4.7	1 to 4.7

Table 4.

Snubber Rule	Gen4 3-Lead	Gen4 4-Lead
Cs (>50 m R _{DS(on)})	4x Coss(er)	Not required
Cs (<50 m R _{DS(on)})	2x Coss(er)	2x Coss(er)
Rs (Ω)	1 to 4.7	1 to 4.7

UM70114/D

BOM

Table 5.

Cs (pF)	Series	Part Number	Package	Rated V
47	C0G	202R18N470JV4E	1206	2000 V
68		C1206C680JGGAC7800	1206	
100		202R18N101JV4E	1206	
150	C0G	C1206C151JGGAC7800	1206	2000 V
220		C1206C221JGGAC7800	1206	
330		C1210C331JGGACTU	1210	
680		C1808C681JGGAC7800	1808	

NOTES:

"C0G" ceramic capacitors have most stable capacitance over temperature and voltage variation.

[KEMET's X8G HV Class I](#) dielectric features a 150 °C maximum operating temperature, offering the latest in high temperature dielectric technology and reliability for extreme temperature applications and under the hood applications. X8G exhibits no change in capacitance with respect to voltage and boasts a minimal change in capacitance with reference to ambient temperature. It is a suitable replacement for higher capacitance and larger footprint devices that fail to offer capacitance stability. Capacitance change is limited to ± 30 ppm/°C from -55 °C to +150 °C. KEMET X8R is available with flexible termination technology which inhibits the transfer of board stress to the rigid ceramic body, therefore mitigating flex cracks which can result in low IR or short circuit failures.

Table 6.

Rs (Ω)	Power Rating (W)	Part Number	Package
4.7	0.5	CRCW08054R70FKEAHP	0805
	0.75	CRCW12104R70JNEAHP	1210
	1	CRCW20104R70JNEFHP	2010
	1.5	CRCW25124R70JNEGHP	2512

NOTES:

The parts recommended in this document are all for general uses with functional isolations in mind. Customers need to adapt them to their specific needs in meeting all the regulation requirements. Customers can use slots or use multiple parts in series to increase the creepage distance according to their design requirements. Please pay attention to make the snubber loop as small as possible so that the performance of a snubber won't be impacted too much.

VISHAY "CRCW-HP e3" series provides excellent pulse load capability and AEC-Q200 qualified.

One of the main benefits of the CRCW-HP resistor is the power dissipation which is much higher than power dissipated from standard chip resistor of the same size. For example, a standard 1206 size thick film resistor is rated at 0.25 W while CRCW1206-HP is rated at 0.75 W. This is mainly achieved by the double-sided printed design. CRCW0805-HP, for instance, is rated at 0.5 W, the same power rating as standard 1210 while occupying much less area on the PCB, so there is a significant PCB space that can be saved. This is one of the reasons why the HP series is recommended for densely populated PCBs. The biggest case size of the CRCW-HP series is 2512, rated at 1.5 W. Additionally, CRCW-HP 0R Jumper offers much higher maximum current capability in the same package size as a standard 0R jumper.

https://www.vishay.com/docs/48634/_crcw-hp_ppt_product_overview_nov2018.pdf

TE Connectivity offers 3540 series of SMD resistors that can handle 4W at 70 °C in 2817 size package.

RECOMMENDATION TABLE FOR ALL PART NUMBER

Table 7. SiC JFET USAGE TABLE UJ3C AND UF3C/SC DEVICES

Product Name	Package	Vdsmax	Id (25 °C)	Id (100 °C)	Rth(j-c) (Typ)	RDS(on) (25 °C)	RDS(on) (125 °C)	RDS(on) (175 °C)	Gate Drive Voltage					Device RC Snubber	Rsnub	Csnub	Esnub @ 10 A	Esnub @ 30 A	Esnub @ 50 A	Esnub @ 80 A	Coss(er)		
									Positive rail RGON			Negative rail RGOFF											
									10 V	12 V	15 V	0 V	-5 V										
Units		V	A	A	C/W	mΩ	mΩ	mΩ	Ω	Ω	Ω	Ω	Ω		Ω	pF	μJ	μJ	μJ	μJ	pF		
650 V Devices																							
UJ3C065080T3S	TO220-3L	650	31	23	0.61	80	110	140	5	10	20	5	10	Recommended	4.7	220						77	
UJ3C065080K3S	TO247-3L	650	31	23	0.61	80	110	140	5	10	20	5	10	Recommended	4.7	220							
UJ3C065080B3	D2PAK-3L	650	25	18.2	1	80	110	140	5	10	20	5	10	Recommended	4.7	220							
UF3C065080T3S	TO220-3L	650	31	23	0.61	80	110	140	5	10	20	10	20	Required	4.7	220							
UF3C065080K3S	TO247-3L	650	31	23	0.61	80	110	140	5	10	20	10	20	Required	4.7	220							
UF3C065080B3	D2PAK-3L	650	25	18.2	1	80	110	140	5	10	20	10	20	Recommended	4.7	220							
UF3C065080B7S	D2PAK-7L	650	27	20	0.83	80	110	140	15	20	30	5	10	Recommended	4.7	150							
UF3C065080K4S	TO247-4L	650	31	23	0.61	80	110	140	15	20	30	5	10	Recommended	4.7	150							
UF3C065040T3S	TO220-3L	650	54	40	0.35	42	58	78	5	10	20	10	20	Required	4.7	330	16	23				150	
UF3C065040K3S	TO247-3L	650	54	40	0.35	42	58	70	5	10	20	10	20	Required	4.7	330							
UF3C065040B3	D2PAK-3L	650	41	30	0.65	42	58	70	5	10	20	10	20	Required	4.7	330							
UF3SC065040B7S	D2PAK-7L	650	43	31.5	0.59	42	58	70	15	20	30	5	10	Recommended	4.7	150							
UF3C065040K4S	TO247-4L	650	54	40	0.35	42	58	70	15	20	30	5	10	Recommended	4.7	150							
UJ3C065030T3S	TO220-3L	650	85	62	0.26	27	35	43	15	20	30	5	10	Recommended	4.7	680	13.8	20.3				230	
UJ3C065030K3S	TO247-3L	650	85	62	0.26	27	35	43	15	20	30	5	10	Recommended	4.7	680							
UJ3C065030B3	D2PAK-3L	650	66	47	0.48	27	35	43	15	20	30	5	10	Recommended	4.7	680							
UF3C065030T3S	TO220-3L	650	85	62	0.26	27	35	43	15	20	30	10	20	Required	4.7	680	15.8	22.5				230	
UF3C065030K3S	TO247-3L	650	85	62	0.26	27	35	43	15	20	30	10	20	Required	4.7	680							
UF3C065030B3	D2PAK-3L	650	66	47	0.48	27	35	43	15	20	30	10	20	Required	4.7	680							
UF3SC065030B7S	D2PAK-7L	650	62	44	0.54	27	35	43	15	20	30	5	10	Recommended	4.7	220							
UF3C065030K4S	TO247-4L	650	85	62	0.26	27	35	43	15	20	30	5	10	Recommended	4.7	220							
UF3SC065007K4S	TO247-7L	650	120	120	0.15	6.7	9.3	11.8	3	5	7	5	10	Recommended	4.7	1000							
1200 V Devices																							
UF3C120400K3S	TO247-3L	1200	7.6	5.9	1.2	410	780	1070	5	10	20	20	30	Recommended	2	47						17.5	
UF3C120400B7S	TO247-3L	1200	7.6	5.9	1.2	410	780	1070	15	20	30	20	30	Recommended	2	30							
UJ3C120150K3S	TO247-3L	1200	18.4	13.8	0.7	150	255	330	5	10	20	20	30	Recommended	4.7	100						34	
UF3C120150K3S	TO247-3L	1200	18.4	13.8	0.7	150	255	330	5	10	20	20	30	Recommended	4.7	100							
UF3C120150B7S	D2PAK-7L	1200	18.4	13.8	0.7	150	255	330	15	20	30	20	30	Recommended	2	68							
UF3C120150K4S	TO247-4L	1200	18.4	13.8	0.7	150	255	330	15	20	30	20	30	Recommended	2	68							
UJ3C120080K3S	TO247-3L	1200	33	24	0.45	80	136	172	5	10	20	10	20	Recommended	4.7	150	5	8				59	
UF3C120080K3S	TO247-3L	1200	33	24	0.45	80	136	172	5	10	20	10	20	Recommended	4.7	150							
UF3C120080B7S	D2PAK-7L	1200	28.8	21	0.61	80	136	172	15	20	30	10	20	Recommended	2	115							
UF3C120080K4S	TO247-4L	1200	33	24	0.45	80	136	172	15	20	30	10	20	Recommended	2	115							
UJ3C120070K3S	TO247-3L	1200	34.5	25.5	0.45	70	111	148	5	10	20	10	20	Recommended	4.7	150						63	
UJ3C120070K4S	TO247-3L	1200	34.5	25.5	0.45	70	111	148	15	20	30	10	20	Recommended	4.7	115							
UJ3C120040K3S	TO247-3L	1200	65	47	0.27	35	56	73	5	10	20	5	10	Recommended	4.7	330	14.7	21.6				112	
UF3C120040K3S	TO247-3L	1200	65	47	0.27	35	56	73	5	10	20	10	20	Required	4.7	330							
UF3SC120040B7S	D2PAK-7L	1200	47	34	0.54	35	56	73	15	20	30	5	10	Recommended	4.7	110	6.9	11.4				243	
UF3C120040K4S	TO247-4L	1200	65	47	0.27	35	56	73	15	20	30	5	10	Recommended	4.7	110							
UF3SC120016K3S	TO247-3L	1200	107	77	0.22	16	26	34	6	8	10	5	10	Required	4.7	680							
UF3SC120016K4S	TO247-4L	1200	107	77	0.22	16	26	34	6	8	10	5	10	Recommended	4.7	470							
UF3SC120009K4S	TO247-4L	1200	180	130	0.15	8.6	13.8	18.2	3	5	7	5	10	Recommended	4.7	680							
1700 V Devices																							
UF3C170400K3S	TO247-3L	1700	7.6	5.9	1.2	410	780	1070	20	30	40	10	20	Recommended	2	47						15.5	
UF3C170400B7S	D2PAK-7L	1700	7.6	5.9	1.2	410	780	1070	10	15	20	5	10	Recommended	2	30							

UM70114/D

Notes for Gen 3 products in hard-switching half-bridge applications:

- UF3CxxxxxyyK4S gives the highest efficiency. Snubber is recommended to improve EMI.
- UF3CxxxxxyyK3S with snubber is a fast solution for 3 lead applications. UF series in 3 terminal packages **MUST** use a snubber for hard-switching.
- Snubber resistor loss is system dependent. Its loss and heat dissipation should be verified in target application.

Notes for Gen 3 products in soft-switching half-bridge applications (LLC, PSFB, etc.):

- DFN8x8, D2PAK-7L, TO247-4L has highest efficiency using low gate resistance (R_g) with C_{ds} across drain-to-source (no R_s).
- UJ3CxxxxxyyK3S does not require snubber capacitance (C_{ds}). For $R_{DS(on)} > 80\text{ m}$, UJ3CxxxxxyyK3S provides good balance of EMI & efficiency.
- A bus snubber with a C_{ds} capacitor generally provides the best efficiency and waveforms. $0.1\ \mu\text{F}$ bus decoupling capacitor (C_d) is recommended. C_d should be placed as close as possible to half-bridge.



UM70114/D

Table 8. SiC JFET USAGE TABLE UJ4C/SC AND UF4C/SC DEVICES

Product Name	Package	V _{dsmax}	I _d (25 °C)	I _d (100 °C)	R _{thjC} (Typ)	R _{DS(on)} (25 °C)	R _{DS(on)} (125 °C)	R _{DS(on)} (175 °C)	Gate Drive Voltage					Device RC Snubber	R _{snub}	C _{snub}	E _{snub} @ 10 A	E _{snub} @ 30 A	E _{snub} @ 50 A	E _{snub} @ 80 A	C _{oss(er)}
									Positive rail RGON			Negative rail RGOFF									
									10 V	12 V	15 V	0 V	-5 V								
Units		V	A	A	C/W	mΩ	mΩ	mΩ	Ω	Ω	Ω	Ω	Ω	Ω	Ω	pF	μJ	μJ	μJ	μJ	pF
750 V Devices																					
UJ4SC075005L8S	MO-229	750	120	120	0.1	5.4	9.3	12.2	3	5	7	5	10	Required	4.7	680					475
UJ4SC075006K4S	TO247-4L	750	120	120	0.16	5.9	9.8	12.9	3	5	7	5	10	Required	4.7	680	18	21	32	60	475
UJ4SC075008L8S	MO-229	750	106	106	0.19	8.6	14.4	19	3	5	7	5	10	Required	4.7	560					286
UJ4SC075009K4S	TO247-4L	750	106	86	0.31	9	14.8	19.4	3	5	7	5	10	Required	4.7	560	15	25	33	60	286
UJ4SC075009B7S	D2PAK-7L	750	106	86	0.31	9	14.8	19.4	3	5	7	5	10	Required	4.7	560					286
UJ4SC075010L8S	MO-229	750	106	92	0.21	10.7	18.1	24	4	6	8	5	10	Required	4.7	470					225
UJ4SC075011K4S	TO247-4L	750	104	75	0.33	11	18.4	24.2	6	8	10	10	20	Required	4.7	390	15	20	26	43	225
UJ4SC075011B7S	D2PAK-7L	750	104	75	0.33	11	18.4	24.2	6	8	10	10	20	Required	4.7	390					225
UJ4C075018K4S	TO247-4L	750	81	60	0.3	18	31	41	15	20	30	20	30	Recommended	4.7	300					150
UJ4C075018K3S	TO247-3L	750	81	60	0.3	18	31	41	15	20	30	20	30	Recommended	4.7	300					
UJ4SC075018B7S	D2PAK-7L	750	81	60	0.45	18	29	37	15	20	30	20	30	Recommended	4.7	300					
UJ4SC075018L8S	MO-229	750	81	60	0.33	18	29	37	15	20	30	20	30	Recommended	4.7	300					116
UJ4C075023K4S	TO247-4L	750	66	49	0.38	23	39	50	5	10	15	5	10	Recommended	4.7	200	8	17	25		
UJ4C075023K3S	TO247-3L	750	66	49	0.38	23	39	50	15	20	30	50	55	Recommended	4.7	200	7	12	17		
UJ4C075023B7S	D2PAK-7L	750	66	49	0.38	23	39	50	5	10	15	5	10	Recommended	4.7	200					83
UJ4C075023L8S	MO-229	750	64	46	0.42	23	39	50	5	10	15	5	10	Recommended	4.7	200					
UJ4C075033K4S	TO247-4L	750	47	39	0.48	33	57	75	10	15	20	10	15	Recommended	4.7	100	7	12	24		
UJ4C075033K3S	TO247-3L	750	47	39	0.48	33	57	75	15	20	30	50	55	Recommended	4.7	100	6	11	15		66
UJ4C075033B7S	D2PAK-7L	750	47	39	0.48	33	57	75	10	15	20	10	15	Recommended	4.7	100					
UJ4C075033L8S	MO-229	750	44	33	0.56	33	57	75	10	15	20	10	15	Recommended	4.7	100					
UJ4C075044K4S	TO247-4L	750	37.4	27.6	0.57	44	75	101	3	4	5.6	22	27	Required	4.7	330	11	16			50
UJ4C075044K3S	TO247-3L	750	37.4	27.6	0.57	44	75	101	30	40	50	50	55	Required	4.7	330					
UJ4C075044B7S	D2PAK-7L	750	37.4	27.6	0.57	44	75	101	3	4	5.6	22	27	Required	4.7	330					
UJ4C075044L8S	MO-229	750	35.6	26	0.64	44	75	101	3	4	5.6	22	27	Required	4.7	330					50
UJ4C075060K4S	TO247-4L	750	28	20.6	0.75	58	106	147	2	3	5	10	15	Recommended	4.7	330					
UJ4C075060B7S	D2PAK-7L	750	28	20.6	0.75	58	106	147	2	3	5	10	15	Recommended	4.7	330					
UJ4C075060L8S	MO-229	750	27.8	20.6	0.75	58	106	147	2	3	5	10	15	Recommended	4.7	330					42
UJ4C075060K3S	TO247-3L	750	28	20.6	0.75	58	106	147	2	3	5	10	15	Recommended	4.7	330					
1200 V Devices																					
UF4SC120023K4S	TO247-4L	1200	53	52	0.3	23	42	57	5	10	15	5	10	Recommended	4.7	100	6	7.5	9		108
UF4SC120023B7S	D2PAK-7L	1200	70	51	0.3	23	42	62	5	10	15	5	10	Recommended	4.7	100	6	7.5	9		
UF4SC120030K4S	TO247-4L	1200	56	41	0.34	30	56	77	15	22	27	27	30	Required	1	560			27	40	82
UF4SC120030B7S	D2PAK-7L	1200	56	41	0.34	30	56	77	15	22	27	27	30	Required	1	560					54
UF4C120053K4S	TO247-4L	1200	34.5	25.6	0.44	53	112	159	2	3	5	10	15	Not Required							
UF4C120053B7S	D2PAK-7L	1200	34	24.6	0.46	53	112	159	2	3	5	10	15	Not Required							54
UF4C120053K3S	TO247-3L	1200	34.5	25.6	0.44	53	112	159	2	3	5	10	15	Recommended	4.7	220					54
UF4C120070K4S	TO247-4L	1200	27.5	20.7	0.53	70	140	197	2	3	5	10	15	Not Required							42
UF4C120070B7S	D2PAK-7L	1200	25.7	19.2	0.63	72	140	197	2	3	5	10	15	Not Required							42
UF4C120070K3S	TO247-3L	1200	27.5	20.7	0.53	70	140	197	2	3	5	10	15	Recommended	4.7	220					42

Notes for Gen 4 products in hard-switching half-bridge applications:

- All Gen 4 750 V devices are measured with a 2.5 Ω, 100 nF bus snubber.
- All Gen 4 750 V TO247-3L devices **require** either a 2.5 Ω, 100 nF Bus snubber or a recommended device snubber (across device drain-to-source).
- For switching currents above 20 A per device, a device snubber is **required**, except for 1200 V 53 mΩ & 1200 V 70 mΩ in TO247-4L.
- Snubber resistor loss is system dependent. Its loss and heat dissipation should be verified in target application.
- Target application for UG series is with very high currents and relatively slow dv/dt (<20 V/ns) like circuit protection, etc.

UM70114/D

Table 9. SiC E1B MODULE USAGE TABLE

Product Name	Package	Vdsmax	Id (25 °C)	Id (100 °C)	RthjC (Typ)	Rps(on) (25 °C)	Rps(on) (125 °C)	Rps(on) (150 °C)	Gate Drive Voltage						Device RC Snubber	Rsnub	Csnub	Esnub @ 10 A	Esnub @ 30 A	Esnub @ 50 A	Esnub @ 80 A	Coss(er)
									Positive rail RGON			Negative rail RGOFF										
									10 V	12 V	15 V	0 V	-5 V									
Units		V	A	A	C/W	mΩ	mΩ	mΩ	Ω	Ω	Ω	Ω	Ω		Ω	pF	μJ	μJ	μJ	μJ	pF	
1200V Devices																						
UHB50SC12E1BC3N	E1B HB	1200	69	45	0.46	19	30	35	10	12	15	4.7	4.7	Recommended	4.7	560					240	
UHB100SC12E1BC3N	E1B HB	1200	100	88	0.23	9.4	15	17.5	10	12	15	4.7	4.7	Recommended	4.7	680					480	
UFB15C12E1BC3N	E1B FB	1200	24	16	1	70	111	129	20	24	30	10	10	Recommended	4.7	270					63	
UFB25SC12E1BC3N	E1B FB	1200	36	23	0.85	35	55	64	20	24	30	10	10	Recommended	4.7	330					120	

Notes for SiC E1B modules:

- Snubbers are strongly recommended for SiC E1B modules due to their intrinsic fast-switching speed. Also, snubber greatly reduces turn-off switching loss making SiC E1B modules extremely attractive in ZVS (zero voltage turn-on) soft-switching applications such as phase-shifted full-bridge (PSFB), LLC, etc.
- This product is recommended for use with **solder pin attach** for PCB assembly and **phase change thermal interface materials** for heatsink assembly. It is **NOT** recommended using press fit for PCB assembly and application of thermal grease for heatsink assembly. Please refer to E1B module [mounting guidelines](#) and [technical overview](#) documents for detailed information.

REFERENCED DOCUMENTS

- [1] onsemi power solutions: <https://www.onsemi.com/products/discrete-power-modules/silicon-carbide-sic>
- [2] SMT assembly guide: <https://www.onsemi.com/download/application-notes/pdf/and90333-d.pdf>
- [3] [Circuit Protection with onsemi SiC Combo JFETs](#)
- [4] X. Li, A. Bhalla and P. Losee, “ClampDRIVE: An Improved Technique for SiC Cascode FET Switching Behavior Control,” 2023 IEEE Applied Power Electronics Conference and Exposition (APEC), Orlando, FL, USA, 2023, pp. 181–186, doi: 10.1109/APEC43580.2023.10131568.
- [5] Web based loss calculator: <https://www.onsemi.com/design/elite-power-simulator>
- [6] Citation: J. Betten, “Power Tips: Calculate an R-C snubber in seven steps”, https://e2e.ti.com/blogs_/b/powerhouse/posts/calculate-an-r-c-snubber-in-seven-steps
- [7] Paralleling SiC Cascode JFETs – Best Practices: <https://www.onsemi.com/download/application-notes/pdf/and90327-d.pdf>

onsemi, Onsemi, and other names, marks, and brands are registered and/or common law trademarks of Semiconductor Components Industries, LLC dba “onsemi” or its affiliates and/or subsidiaries in the United States and/or other countries. onsemi owns the rights to a number of patents, trademarks, copyrights, trade secrets, and other intellectual property. A listing of onsemi’s product/patent coverage may be accessed at www.onsemi.com/site/pdf/Patent-Marking.pdf. onsemi reserves the right to make changes at any time to any products or information herein, without notice. The information herein is provided “as-is” and onsemi makes no warranty, representation or guarantee regarding the accuracy of the information, product features, availability, functionality, or suitability of its products for any particular purpose, nor does onsemi assume any liability arising out of the application or use of any product or circuit, and specifically disclaims any and all liability, including without limitation special, consequential or incidental damages. Buyer is responsible for its products and applications using onsemi products, including compliance with all laws, regulations and safety requirements or standards, regardless of any support or applications information provided by onsemi. “Typical” parameters which may be provided in onsemi data sheets and/or specifications can and do vary in different applications and actual performance may vary over time. All operating parameters, including “Typicals” must be validated for each customer application by customer’s technical experts. onsemi does not convey any license under any of its intellectual property rights nor the rights of others. onsemi products are not designed, intended, or authorized for use as a critical component in life support systems or any FDA Class 3 medical devices or medical devices with a same or similar classification in a foreign jurisdiction or any devices intended for implantation in the human body. Should Buyer purchase or use onsemi products for any such unintended or unauthorized application, Buyer shall indemnify and hold onsemi and its officers, employees, subsidiaries, affiliates, and distributors harmless against all claims, costs, damages, and expenses, and reasonable attorney fees arising out of, directly or indirectly, any claim of personal injury or death associated with such unintended or unauthorized use, even if such claim alleges that onsemi was negligent regarding the design or manufacture of the part. onsemi is an Equal Opportunity/Affirmative Action Employer. This literature is subject to all applicable copyright laws and is not for resale in any manner.

ADDITIONAL INFORMATION

TECHNICAL PUBLICATIONS:
 Technical Library: www.onsemi.com/design/resources/technical-documentation
 onsemi Website: www.onsemi.com

ONLINE SUPPORT: www.onsemi.com/support
 For additional information, please contact your local Sales Representative at www.onsemi.com/support/sales