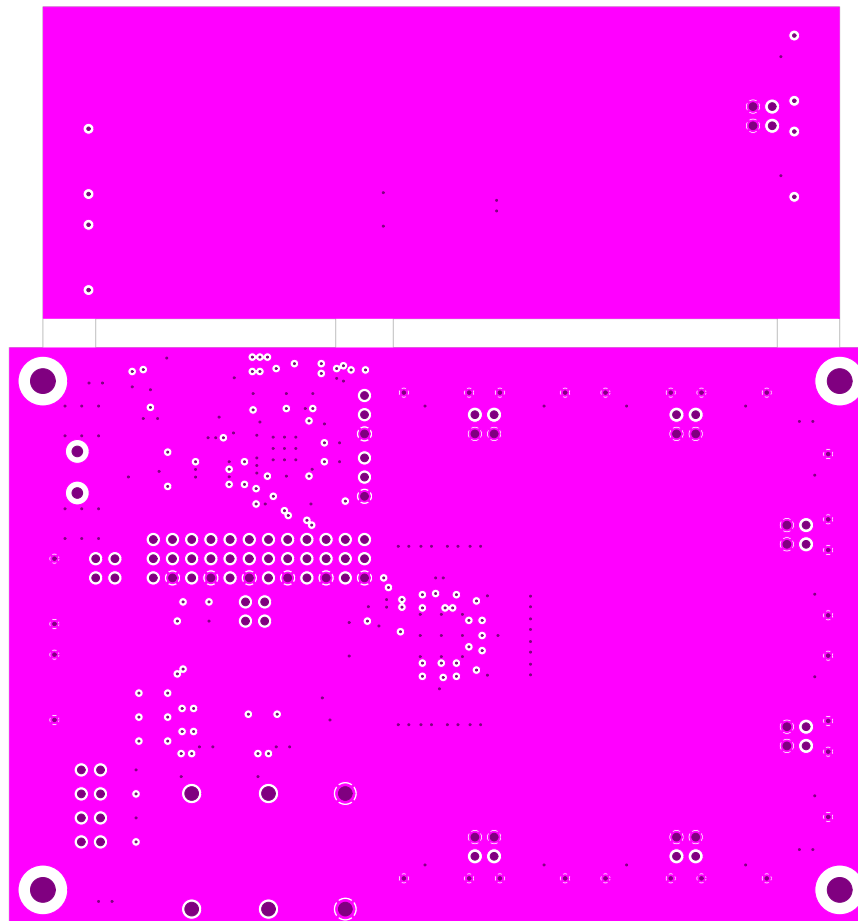


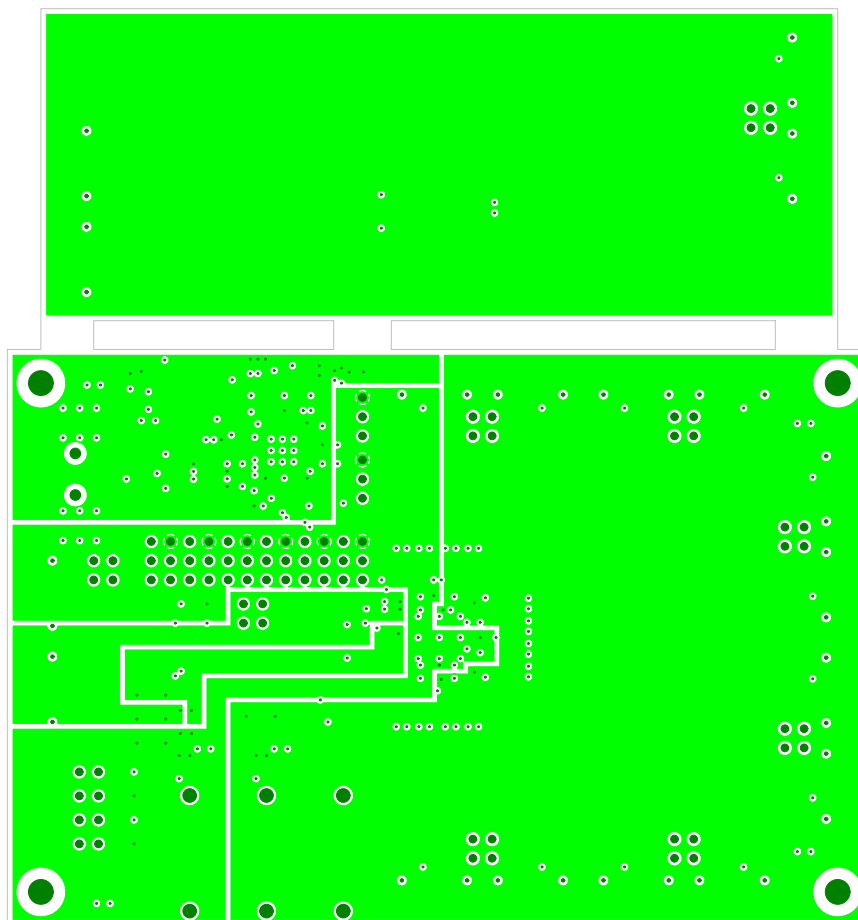
|  |                 |
|--|-----------------|
| BOARD TECHNOLOGY INNOVATIONS, LLC<br>www.btipcb.com  |                 |
| BTI PN: BTI-13062  | DATE: 4/26/2013 |
| DSG NR: D.ELEFANTE   |                 |
| DESIGNED FOR:<br>ZEPHYR ENGINEERING<br>CARL SPEAROW<br>NB3N1200K-NB3W1200L DEMO BOARD<br>ZN9403-01 REV A |                 |

PRIMARY SIDE LAYER 1



|  |                 |
|--|-----------------|
| BOARD TECHNOLOGY INNOVATIONS, LLC<br>www.btipcb.com  |                 |
| BTI PN: BTI-13062  | DATE: 4/26/2013 |
| DSG NR: D.ELEFANTE   |                 |
| DESIGNED FOR:<br>ZEPHYR ENGINEERING<br>CARL SPEAROW<br>NB3N1200K-NB3W1200L DEMO BOARD<br>ZN9403-01 REV A |                 |

GROUND PLANE LAYER 2



BOARD TECHNOLOGY INNOVATIONS, LLC  
[www.btipcb.com](http://www.btipcb.com)

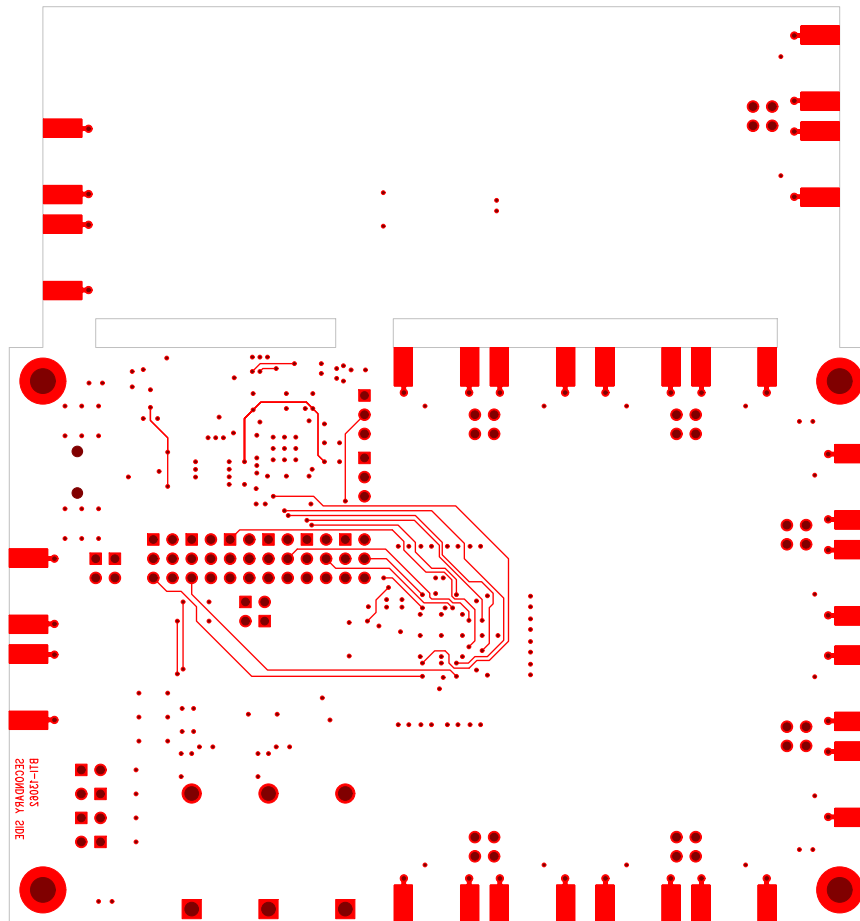
BTI PN: BTI-13062

DATE: 4/26/2013

DSG NR: D.ELEFANTE

DESIGNED FOR:  
ZEPHYR ENGINEERING  
CARL SPEAROW  
NB3N1200K-NB3W1200L DEMO BOARD  
ZN9403-01 REV A

POWER PLANE LAYER 3



BTI-12083  
26/09/2013 20:15

BOARD TECHNOLOGY INNOVATIONS, LLC  
[www.btipcb.com](http://www.btipcb.com)

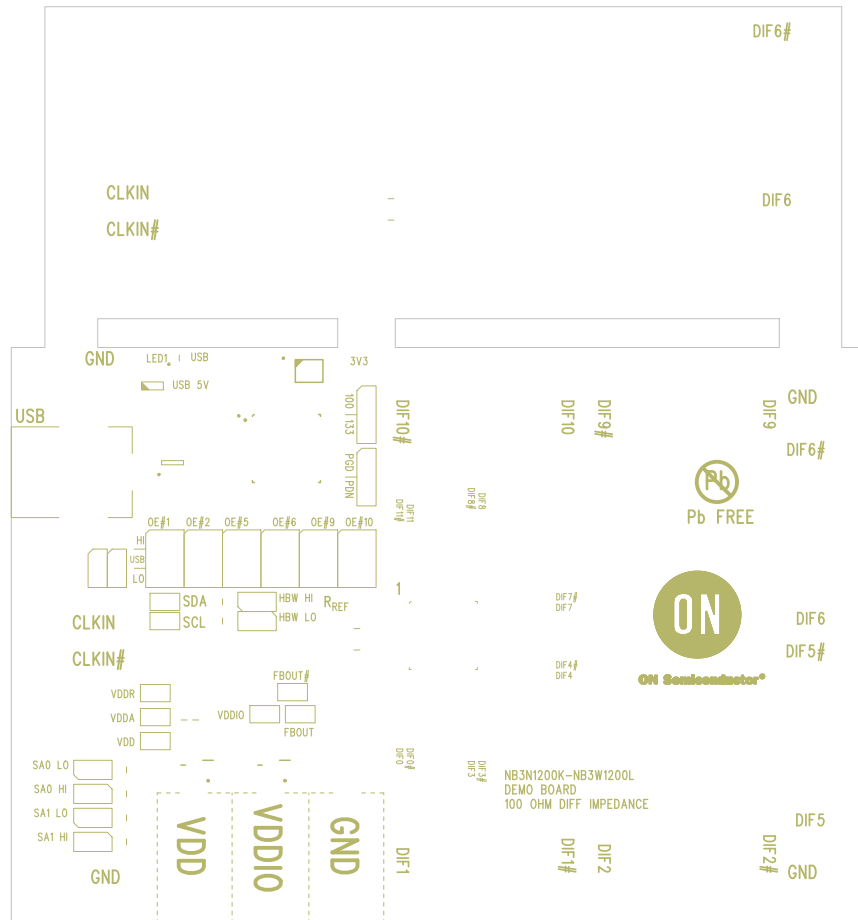
BTI PN: BTI-13062

DATE: 4/26/2013

DSG NR: D.ELEFANTE

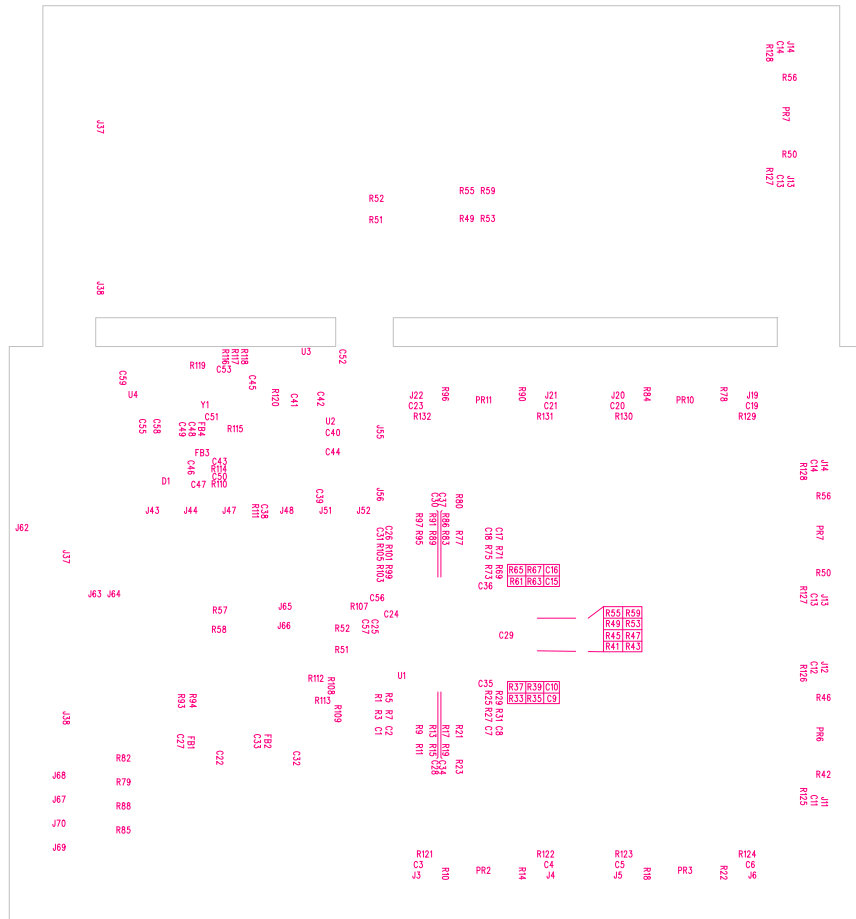
DESIGNED FOR:  
ZEPHYR ENGINEERING  
CARL SPEAROW  
NB3N1200K-NB3W1200L DEMO BOARD  
ZN9403-01 REV A

SECONDARY SIDE LAYER 4



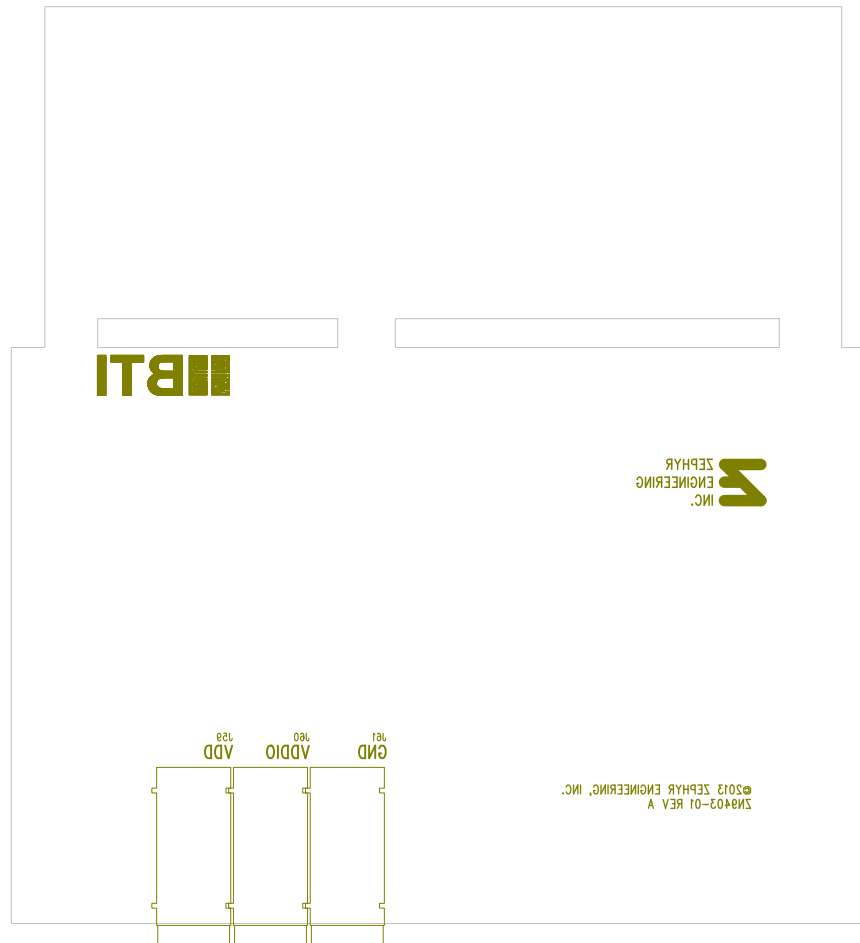
|  |                 |
|--|-----------------|
| BOARD TECHNOLOGY INNOVATIONS, LLC<br>www.btipcb.com  |                 |
| BTI PN: BTI-13062  | DATE: 4/26/2013 |
| DSG NR: D.ELEFANTE   |                 |
| DESIGNED FOR:<br>ZEPHYR ENGINEERING<br>CARL SPEAROW<br>NB3N1200K-NB3W1200L DEMO BOARD<br>ZN9403-01 REV A |                 |

PRIMARY SILKSCREEN 1



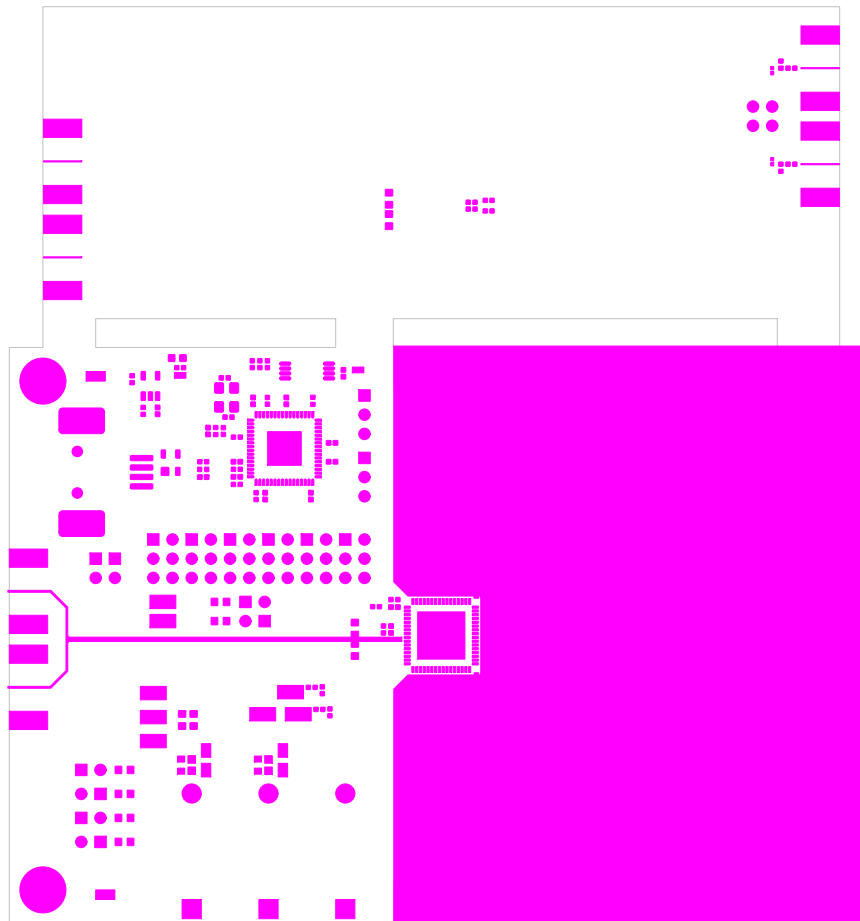
|  |                 |
|--|-----------------|
| BOARD TECHNOLOGY INNOVATIONS, LLC<br>www.btipcb.com  |                 |
| BTI PN: BTI-13062  | DATE: 4/26/2013 |
| DSG NR: D.ELEFANTE   |                 |
| DESIGNED FOR:<br>ZEPHYR ENGINEERING<br>CARL SPEAROW<br>NB3N1200K-NB3W1200L DEMO BOARD<br>ZN9403-01 REV A |                 |

PRIMARY SILKSCREEN 2



|  |                 |
|--|-----------------|
| BOARD TECHNOLOGY INNOVATIONS, LLC<br>www.btipcb.com  |                 |
| BTI PN: BTI-13062  | DATE: 4/26/2013 |
| DSG NR: D.ELEFANTE   |                 |
| DESIGNED FOR:<br>ZEPHYR ENGINEERING<br>CARL SPEAROW<br>NB3N1200K-NB3W1200L DEMO BOARD<br>ZN9403-01 REV A |                 |

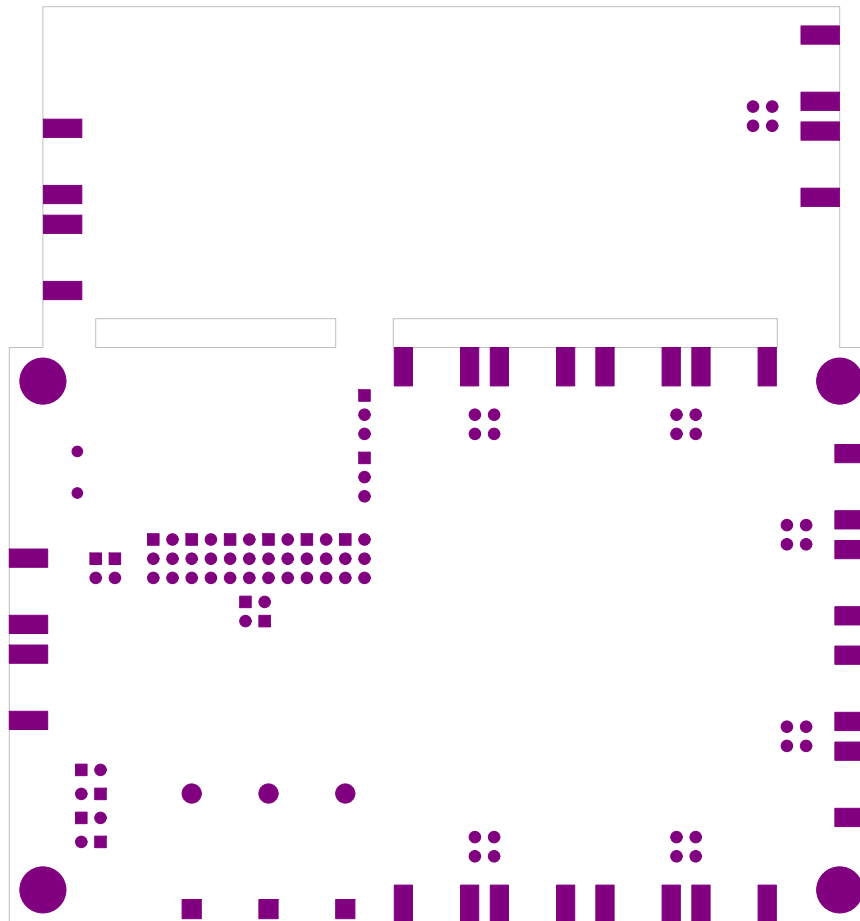
SECONDARY SILKSCREEN



|  |                 |
|--|-----------------|
| BOARD TECHNOLOGY INNOVATIONS, LLC<br>www.btipcb.com  |                 |
| BTI PN: BTI-13062  | DATE: 4/26/2013 |
| DSG NR: D.ELEFANTE   |                 |
| DESIGNED FOR:<br>ZEPHYR ENGINEERING<br>CARL SPEAROW<br>NB3N1200K-NB3W1200L DEMO BOARD<br>ZN9403-01 REV A |                 |

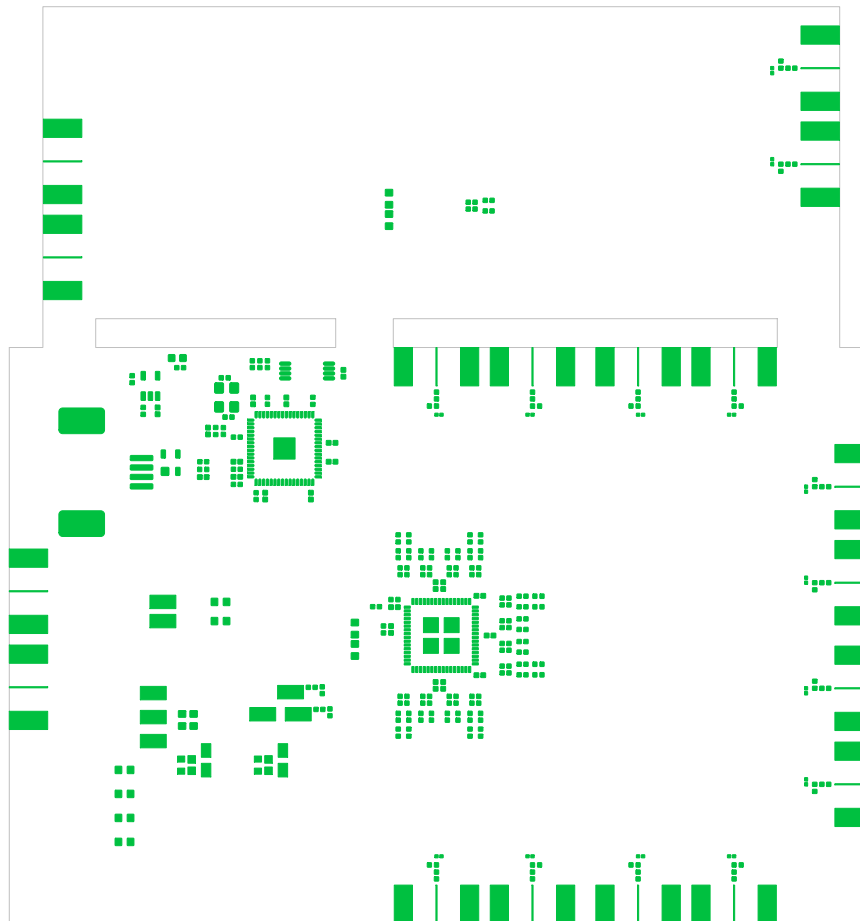
PRIMARY SOLDER MASK





|  |                 |
|--|-----------------|
| BOARD TECHNOLOGY INNOVATIONS, LLC<br><a href="http://www.btipcb.com">www.btipcb.com</a>                  |                 |
| BTI PN: BTI-13062  | DATE: 4/26/2013 |
| DSG NR: D.ELEFANTE   |                 |
| DESIGNED FOR:<br>ZEPHYR ENGINEERING<br>CARL SPEAROW<br>NB3N1200K-NB3W1200L DEMO BOARD<br>ZN9403-01 REV A |                 |

SECONDARY SOLDER MASK



BOARD TECHNOLOGY INNOVATIONS, LLC  
[www.btipcb.com](http://www.btipcb.com)

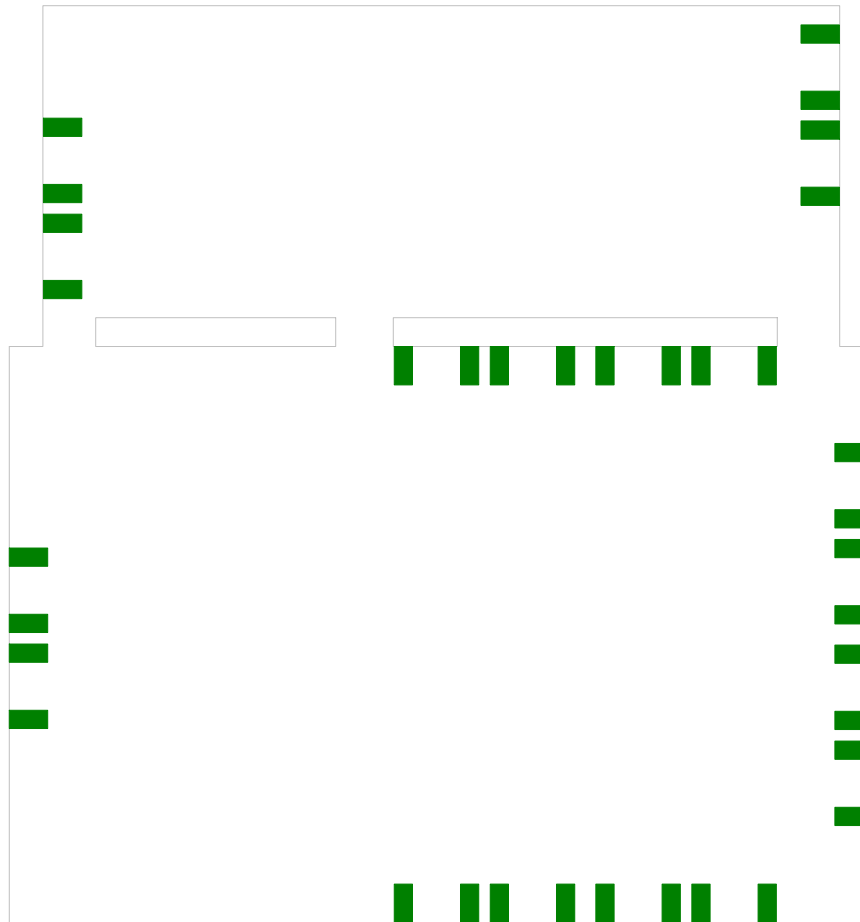
BTI PN: BTI-13062

DATE: 4/26/2013

DSG NR: D.ELEFANTE

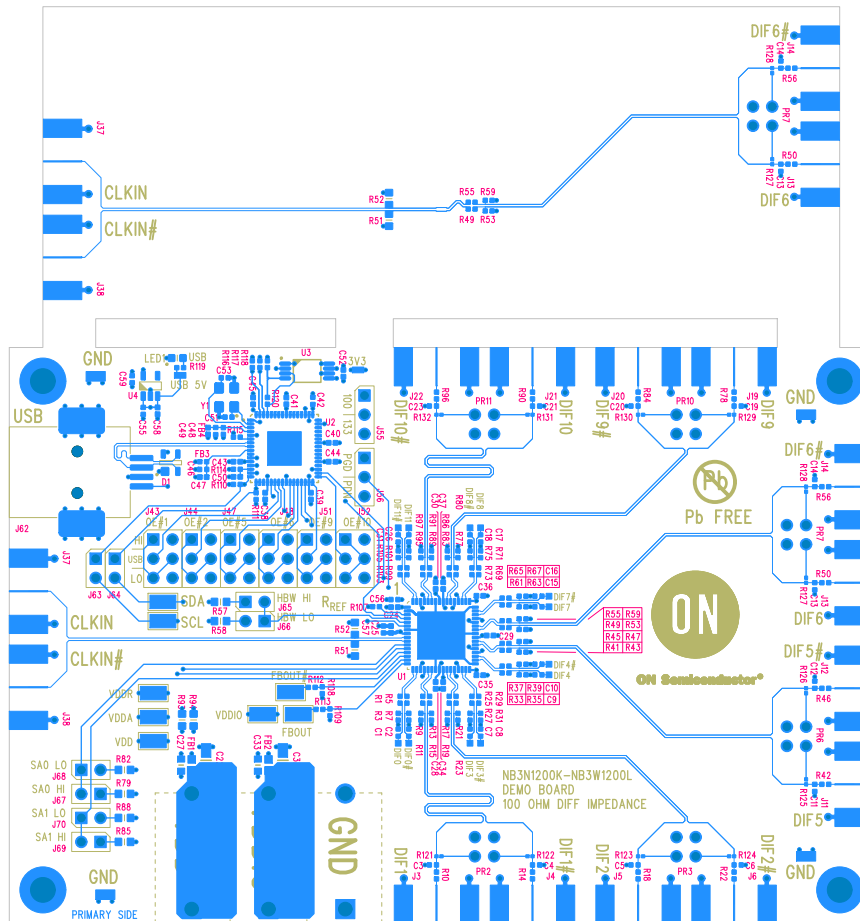
DESIGNED FOR:  
ZEPHYR ENGINEERING  
CARL SPEAROW  
NB3N1200K-NB3W1200L DEMO BOARD  
ZN9403-01 REV A

PRIMARY SOLDER PASTE



|  |                 |
|--|-----------------|
| BOARD TECHNOLOGY INNOVATIONS, LLC<br>www.btipcb.com  |                 |
| BTI PN: BTI-13062  | DATE: 4/26/2013 |
| DSGNR: D.ELEFANTE  |                 |
| DESIGNED FOR:<br>ZEPHYR ENGINEERING<br>CARL SPEAROW<br>NB3N1200K-NB3W1200L DEMO BOARD<br>ZN9403-01 REV A |                 |

SECONDARY SOLDER PASTE



|  |                 |
|--|-----------------|
| BOARD TECHNOLOGY INNOVATIONS, LLC<br>www.btipcb.com  |                 |
| BTI PN: BTI-13062  | DATE: 4/26/2013 |
| DSG NR: D.ELEFANTE   |                 |
| DESIGNED FOR:<br>ZEPHYR ENGINEERING<br>CARL SPEAROW<br>NB3N1200K-NB3W1200L DEMO BOARD<br>ZN9403-01 REV A |                 |

PRIMARY SILKSCREEN 1  
PRIMARY SILKSCREEN 2

PRIMARY SIDE LAYER 1

|                                   |                 |
|-----------------------------------|-----------------|
| BOARD TECHNOLOGY INNOVATIONS, LLC |                 |
| www.bti.qtd.com                   |                 |
| BTI P/N: BTI-13062                | DATE: 4/28/2013 |
| DESIGNER: D.ELEFANTE              |                 |
| DESIGNED FOR:                     |                 |
| ZEPHYR ENGINEERING                |                 |
| CARL SPEAROW                      |                 |
| NB3M1500K-NB3M1500L DEMO BOARD    |                 |
| ZN9403-01 REV A                   |                 |

SECONDARY SILKSCREEN

SECONDARY SIDE LAYER 4

