

NOTES (UNLESS OTHERWISE SPECIFIED):

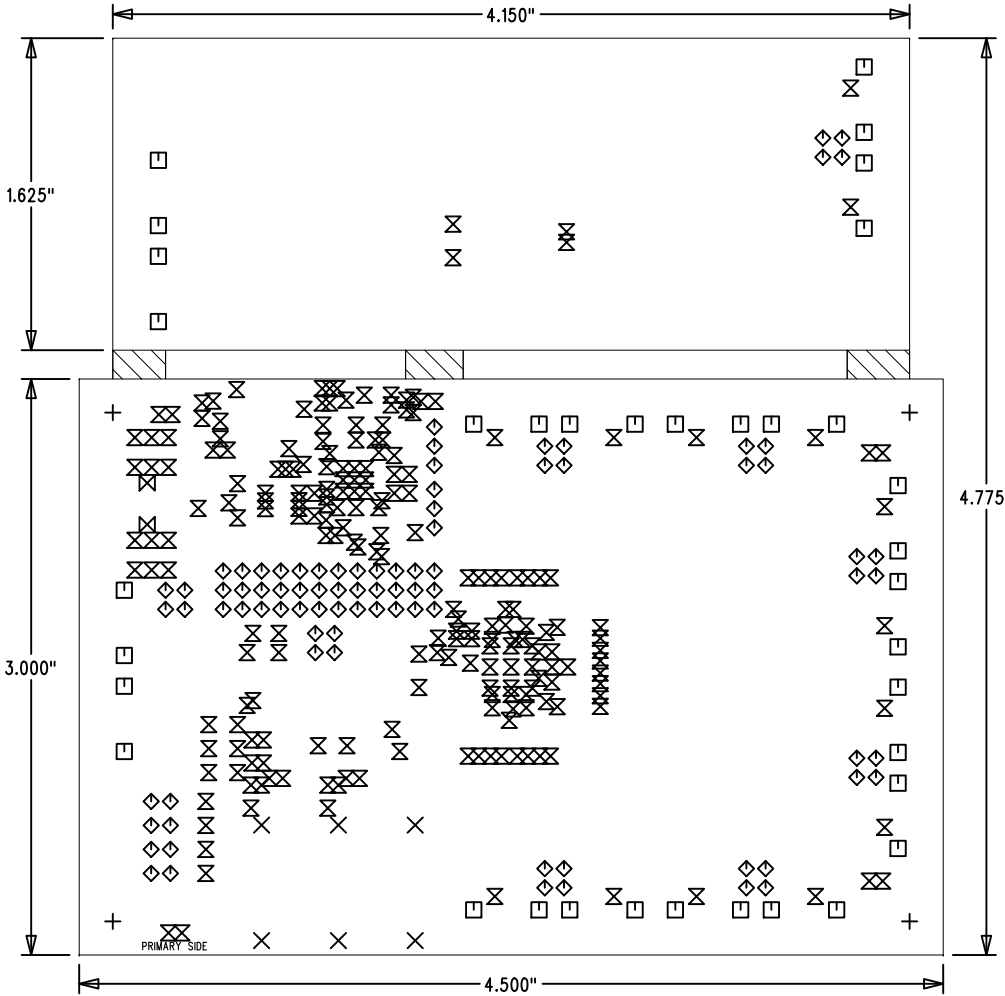
1. MATERIAL: EPOXY FIBERGLASS FR-4 OR EQUIVALENT, 0.062"  $\pm$ 10% FINISHED THICKNESS.
2. FINISHED COPPER THICKNESS TO BE 1.0 OZ. ALL LAYERS
3. MINIMUM COPPER PLATING 0.001" THICK FOR PLATED THROUGH HOLES.  
ANNULAR RING TO BE 0.002" MINIMUM.
4. SOLDER MASK OVER BARE GOLD BOTH SIDES, L.P.I., GREEN IN COLOR.
5. SOLDER MASK REGISTRATION  $\pm$  0.003". ALL TRACES ADJACENT TO PADS  
SHALL BE COMPLETELY COVERED WITH SOLDER MASK.
6. ENIG - SURFACE FINISH TO BE ELECTROLESS-NICKEL IMMERSION GOLD PRIOR TO SOLDER MASK.
7. PRIMARY SILKSCREEN 1 SHALL BE WHITE EPOXY INK.
8. PRIMARY SILKSCREEN 2 & SECONDARY SILKSCREEN SHALL BE BLACK EPOXY INK.
9. HOLE DIAMETER TOLERANCE IS  $\pm$  0.003" AFTER PLATING.
10. HOLE LOCATION  $\pm$  0.003". MAXIMUM LAYER-TO-LAYER MIS-REGISTRATION SHALL BE 0.003".
11. FINISHED CONDUCTOR WIDTH SHALL NOT VARY MORE THAN  $\pm$  10% FROM ARTWORK MASTER.
12. WARP AND TWIST OF BOARD SHALL NOT EXCEED 0.005 INCH PER INCH.
13. ALL DIMENSIONS ARE IN INCHES. TOLERANCES: .XX =  $\pm$  0.010", .XXX =  $\pm$  0.005".
14. ACCEPTABILITY REQUIREMENTS PER IPC-A-600D, CLASS 2.
15. VENDORS UL APPROVED LOGO TO BE LOCATED ON SOLDER OR SECONDARY SIDE OF BOARD.
16. DRAWING IS VIEWED FROM PRIMARY SIDE.
17. THIS IS A 4-LAYER BOARD.
18. DRILL SIZE UNITS IN INCHES.
19. DO NOT TRIM SILKSCREEN THAT FLOWS OVER VIA HOLES.
20. USE GERBER GENERATED DATA FOR BOARD OUTLINE AND CUTOUTS.
21. COMPARE IPC-D-356 NETLIST WITH GERBER GENERATED NETLIST PRIOR TO WORKMANSHIP.
22. DIFFERENTIAL PAIR SPECIFICATIONS:

VALUE (OHMS)	TRACE/SPACE (MILS)	TOLERANCE (PERCENT)	LAYERS
90	5.5 / 7.5	$\pm$ 10	1
100	4.5 / 8.5	$\pm$ 10	1

21.  ADD MOUSE BITES TO THESE AREAS.

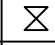
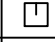

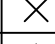
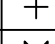

FABRICATION DRAWING

REFERENCE DOCUMENT BTI-13062\_FABNOTES.PDF  
FOR COMPLETE FABRICATION DRAWING NOTES



BOARD TECHNOLOGY INNOVATIONS, LLC www.btipcb.com	
BTI P#: BTI-13062	DATE: 4/26/2013
DESIGNER: D.ELEFANTE	
DESIGNED FOR: ZEPHYR ENGINEERING CARL SPEAROW NB3N1200K-NB3W1200L DEMO BOARD ZN9403-01 REV A	

PRIMARY SIDE LAYER 1

SIZE	QTY	SYM	PLATED	TOL
0.01	225		YES	$\pm$ 0.003
0.018	36		YES	$\pm$ 0.003
0.04	86		YES	$\pm$ 0.003
0.071	6		YES	$\pm$ 0.003
0.129	4		YES	$\pm$ 0.003
0.05512	2		NO	$\pm$ 0.003

4-LAYER STACK-UP

