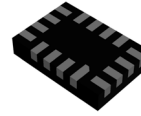
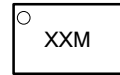


4-Bit Configurable Dual-Supply Transceiver with 3-State Outputs

T30LMXT3V4T245

**MARKING
DIAGRAM**

**UQFN16
MU SUFFIX
CASE 523BF**


XXXX = Specific Device Code
 A = Assembly Location
 M = Date Code/Assembly Location
 L, WL = Wafer Lot
 Y = Year
 W, WW = Work Week
 G or ■ = Pb-Free Package

(Note: Microdot may be in either location)

The T30LMXT3V4T245 is a 4-bit configurable dual-supply translating bidirectional transceiver with 3-state outputs. The A- and B-ports are designed to track two different power supply rails, V_{CCA} and V_{CCB} respectively. Both supply rails are configurable from 0.9 V to 3.6 V allowing universal bidirectional voltage translation between the A- and B-ports.

The T30LMXT3V4T245 transceiver consists of two groups of 2-bit transceivers, each of which may be independently controlled by its own direction (1DIR, 2DIR) and output enable pins ($\overline{1OE}$, $\overline{2OE}$). The Direction inputs, 1DIR and 2DIR, determine the direction of data flow for each group. When nDIR is High, data flows from nA to nB. When nDIR is Low, data flows from nB to nA. The Output Enable inputs, $\overline{1OE}$ and $\overline{2OE}$, when High, disables both A- and B-ports of group 1 and 2 respectively, by putting them in 3-state. The 1DIR, 2DIR, $\overline{1OE}$ and $\overline{2OE}$ signals are designed to track V_{CCA} .

Features

- Wide V_{CCA} and V_{CCB} Operating Range: 0.9 V to 3.6 V
- Balanced Output Drive: ± 24 mA @ 3.0 V
- High-Speed w/ Balanced Propagation Delay:
2.3 ns max at 3.0 to 3.6 V
- Input Pins OVT to 3.6 V
- Non-preferential V_{CC} Sequencing
- Outputs at 3-State until Active V_{CC} is reached
- Partial Power-Off Protection
- Outputs Switch to 3-State with either V_{CC} at GND
- Typical Max Data Rates
 - 400 Mbps (≥ 1.8 V to 3.3 V Translation)
 - 200 Mbps (≥ 1.1 V to [1.8 V, 2.5 V, 3.3 V] Translation)
 - 150 Mbps (≥ 1.1 V to 1.5 V Translation)
 - 100 Mbps (≥ 1.1 V to 1.2 V Translation)
- Small Pb-Free Packaging:
UQFN16 (1.8 mm x 2.6 mm)

Typical Applications

- Mobile Phones, PDAs, Other Portable Devices
- Automotive

ORDERING INFORMATION

See detailed ordering and shipping information on page 9 of this data sheet.

T30LMXT3V4T245

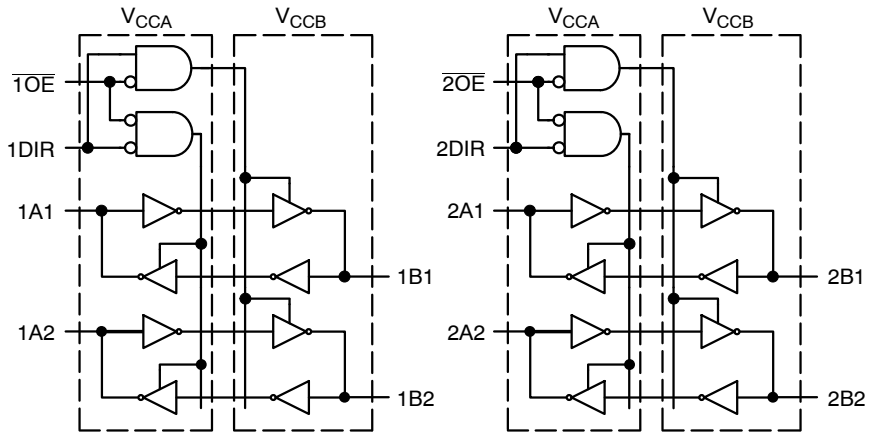


Figure 1. Logic Diagrams (T30LMXT3V4T245)

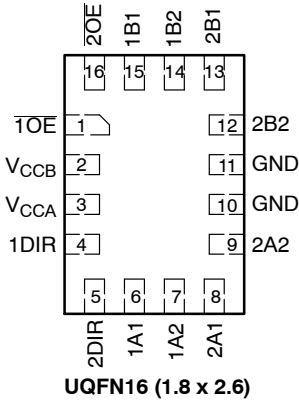


Figure 2. Pin Assignments (T30LMXT3V4T245, Top View)

PIN NAMES

Pins	Description
VCCA	A-Port DC Power Supply
VCCB	B-Port DC Power Supply
GND	Ground
1OE, 2OE	Output Enable
1DIR, 2DIR	Direction Selects
1A1, 1A2, 2A1, 2A2	A-Port I/O
1B1, 1B2, 2B1, 2B2	B-Port I/O

FUNCTION TABLE

nOE	nDIR	Operating Mode
L	L	nB to nA
L	H	nA to nB
H	X	n Ports at Hi-Z

T30LMXT3V4T245

MAXIMUM RATINGS

Symbol	Parameter	Condition	Value	Unit	
V_{CCA}, V_{CCB}	DC Supply Voltage		-0.5 to +4.3	V	
V_I	Input Voltage	OE, DIR	-0.5 to +4.3	V	
		A	-0.5 to +4.3		
		B	-0.5 to +4.3		
V_O	Output Voltage	(Power Down Mode) A, B	$V_{CCA} = V_{CCB} = 0$	-0.5 to +4.3	V
		(3-State Mode) A, B		-0.5 to +4.3	
		(Active Mode) A		-0.5 to $V_{CCA}+0.5$	
		(Active Mode) B		-0.5 to $V_{CCB}+0.5$	
I_{IK}	DC Input Diode Current	$V_I < \text{GND}$	-50	mA	
I_{OK}	DC Output Diode Current	$V_O < \text{GND}$	-50	mA	
I_O	DC Output Source/Sink Current		± 50	mA	
I_{CC}	DC Supply Current Per Supply Pin		± 100	mA	
I_{GND}	DC Ground Current per Ground Pin		± 100	mA	
T_{STG}	Storage Temperature Range		-65 to +150	°C	
T_J	Junction Temperature Under Bias		150	°C	
θ_{JA}	Thermal Resistance (Note 1)	UQFN16	142	°C/W	
P_D	Power Dissipation in Still Air	UQFN16	875	mW	
MSL	Moisture Sensitivity Level		Level 1	-	
F_R	Flammability Rating	Oxygen Index: 28 to 34	UL 94 V-0 @ 0.125 in	-	
V_{ESD}	ESD Withstand Voltage (Note 2)	Human Body Model	2	kV	
		Charged Device Model	1		
$I_{LATCHUP}$	Latchup Performance Above V_{CC} and Below GND at 25°C (Note 3)		± 100	mA	

Stresses exceeding those listed in the Maximum Ratings table may damage the device. If any of these limits are exceeded, device functionality should not be assumed, damage may occur and reliability may be affected.

1. Measured with minimum pad spacing on an FR4 board, using 76 mm-by-114 mm, 2-ounce copper trace no air flow per JESD51-7.
2. HBM tested to ANSI/ESDA/JEDEC JS-001-2017. CDM tested to EIA/JESD22-C101-A. JEDEC recommends that ESD qualification to EIA/JESD22-A115-A (Machine Model) be discontinued per JEDEC/JEP172A.
3. Tested to EIA/JESD78 Class II.

T30LMXT3V4T245

RECOMMENDED OPERATING CONDITIONS

Symbol	Parameter	Min	Max	Unit
V_{CCA}, V_{CCB}	Positive DC Supply Voltage	0.9	3.6	V
V_I	Input Voltage	GND	3.6	V
V_O	Output Voltage (Power Down) A, B (3-State Mode) A, B (Active Mode) A (Active Mode) B	GND	3.6	V
		GND	3.6	
		GND	V_{CCA}	
		GND	V_{CCB}	
T_A	Operating Temperature Range	-40	+125	°C
$\Delta t / \Delta V$	Input Transition Rise or Fall Rate	0	5	nS/V

Functional operation above the stresses listed in the Recommended Operating Ranges is not implied. Extended exposure to stresses beyond the Recommended Operating Ranges limits may affect device reliability.

DC ELECTRICAL CHARACTERISTICS – INPUT VOLTAGES

Symbol	Parameter	Test Conditions	Port	V_{CCA} (V)	V_{CCB} (V)	$T_A = -40\text{ }^\circ\text{C to }+85\text{ }^\circ\text{C}$			$T_A = -40\text{ }^\circ\text{C to }+125\text{ }^\circ\text{C}$		Unit
						Min	Typ (Note 4)	Max	Min	Max	
V_{IH}	Input HIGH Voltage		\overline{OE} , DIR, A	2.7 – 3.6	0.9 – 3.6	2.0	–	–	2.0	–	V
				2.3 – 2.7		1.6	–	–	1.6	–	
				0.9 – 1.95		0.65 V_{CCA}	–	–	0.65 V_{CCA}	–	
			B	0.9 – 3.6	2.7 – 3.6	2.0	–	–	2.0	–	
				2.3 – 2.7	1.6	–	–	1.6	–		
				0.9 – 1.95	0.65 V_{CCB}	–	–	0.65 V_{CCB}	–		
V_{IL}	Input LOW Voltage		\overline{OE} , DIR, A	2.7 – 3.6	0.9 – 3.6	–	–	0.8	–	0.8	V
				2.3 – 2.7		–	–	0.7	–	0.7	
				0.9 – 1.95		–	–	0.35 V_{CCA}	–	0.35 V_{CCA}	
			B	0.9 – 3.6	2.7 – 3.6	–	–	0.8	–	0.8	
				2.3 – 2.7	–	–	0.7	–	0.7		
				0.9 – 1.95	–	–	0.35 V_{CCB}	–	0.35 V_{CCB}		

Product parametric performance is indicated in the Electrical Characteristics for the listed test conditions, unless otherwise noted. Product performance may not be indicated by the Electrical Characteristics if operated under different conditions.

4. All typical values are at $T_A = 25\text{ }^\circ\text{C}$.

T30LMXT3V4T245

DC ELECTRICAL CHARACTERISTICS – OUTPUT VOLTAGES

Symbol	Parameter	Test Conditions	V _{CCA} (V)	V _{CCB} (V)	T _A = -40 °C to +85 °C			T _A = -40 °C to +125 °C		Unit
					Min	Typ (Note 4)	Max	Min	Max	
					V _{OH}	Output HIGH Voltage	V _I = V _{IH} or V _{IL} :			
		I _{OH} = -100 μA	0.9 – 3.6	0.9 – 3.6	V _{CCA} – 0.1	–	–	V _{CCA} – 0.1	–	
		I _{OH} = -0.5 mA	0.9	0.9	0.7	–	–	0.7	–	
		I _{OH} = -2 mA	1.1	1.1	0.85	–	–	0.85	–	
		I _{OH} = -6 mA	1.4	1.4	1.05	–	–	1.05	–	
		I _{OH} = -8 mA	1.65	1.65	1.2	–	–	1.2	–	
		I _{OH} = -12 mA	2.3	2.3	1.8	–	–	1.8	–	
			2.7	2.7	2.2	–	–	2.2	–	
		I _{OH} = -18 mA	2.3	2.3	1.7	–	–	1.7	–	
			3.0	3.0	2.4	–	–	2.4	–	
		I _{OH} = -24 mA	3.0	3.0	2.2	–	–	2.2	–	
V _{OL}	Output LOW Voltage	V _I = V _{IH} or V _{IL} :								V
		I _{OL} = 100 μA	0.9 – 3.6	0.9 – 3.6	–	–	0.1	–	0.1	
		I _{OL} = 0.5 mA	0.9	0.9	–	–	0.2	–	0.2	
		I _{OL} = 2 mA	1.1	1.1	–	–	0.25	–	0.25	
		I _{OL} = 6 mA	1.4	1.4	–	–	0.35	–	0.35	
		I _{OL} = 8 mA	1.65	1.65	–	–	0.3	–	0.3	
		I _{OL} = 12 mA	2.3	2.3	–	–	0.4	–	0.4	
			2.7	2.7	–	–	0.4	–	0.4	
		I _{OL} = 18 mA	2.3	2.3	–	–	0.4	–	0.4	
			3.0	3.0	–	–	0.4	–	0.4	
		I _{OL} = 24 mA	3.0	3.0	–	–	0.55	–	0.55	

DC ELECTRICAL CHARACTERISTICS – LEAKAGE AND SUPPLY CURRENTS

Symbol	Parameter	Test Conditions	V _{CCA} (V)	V _{CCB} (V)	T _A = -40 °C to +85 °C		T _A = -40 °C to +125 °C		Unit
					Min	Max	Min	Max	
					I _I	Input Leakage Current	V _I = 3.6 V or GND	0.9 – 3.6	
I _{OZ}	3-State Output Leakage	OE = V _{IH} ; V _I = 3.6 V or GND, V _O = GND to 3.6 V	3.6	3.6	–	±0.1	–	±1.0	μA
I _{OFF}	Power-Off Leakage Current	V _I or V _O = 0 to 3.6 V	0	0.9 – 3.6	–	±0.1	–	±1.0	μA
		B	0.9 – 3.6	0	–	±0.1	–	±1.0	

T30LMXT3V4T245

DC ELECTRICAL CHARACTERISTICS – LEAKAGE AND SUPPLY CURRENTS

Symbol	Parameter	Test Conditions	V _{CCA} (V)	V _{CCB} (V)	T _A = -40 °C to +85 °C		T _A = -40 °C to +125 °C		Unit
					Min	Max	Min	Max	
					I _{CCA}	Quiescent Supply Current	V _I = V _{CCA} or GND; I _O = 0	0.9 – 3.6	
			0	0.9 – 3.6	–	-0.1	–	-1	
			0.9 – 3.6	0	–	0.1	–	1.0	
I _{CCB}	Quiescent Supply Current	V _I = V _{CCB} or GND; I _O = 0	0.9 – 3.6	0.9 – 3.6	–	0.5	–	1.0	μA
			0	0.9 – 3.6	–	0.1	–	1.0	
			0.9 – 3.6	0	–	-0.1	–	-1.0	

NOTE: Connect ground before applying supply voltage V_{CCA} or V_{CCB}. This device is designed with the feature that the power-up sequence of V_{CCA} and V_{CCB} will not damage the IC.

AC ELECTRICAL CHARACTERISTICS (Note 5)

Symbol	Parameter	V _{CCA} (V)	T _A = -40 °C to +85 °C					T _A = -40 °C to +125 °C					Unit
			V _{CCB} (V)					V _{CCB} (V)					
			3.3	2.5	1.8	1.5	1.2	3.3	2.5	1.8	1.5	1.2	
			Max	Max	Max	Max	Max	Max	Max	Max	Max	Max	
t _{PLH} , t _{PHL}	Propagation Delay, A to B	3.3	2.9	3.3	4.5	5.6	9.3	3.3	3.8	5.0	6.2	9.5	ns
		2.5	3.3	3.7	4.6	5.7	9.4	4.0	4.0	5.1	6.3	9.6	
		1.8	3.9	4.0	4.9	6.0	9.6	4.3	4.3	5.4	6.6	9.8	
		1.5	4.2	4.3	5.2	6.3	9.8	4.7	4.7	5.8	7.0	10	
		1.2	5.1	5.2	6.2	7.1	11.0	5.7	5.8	6.9	7.9	11.2	
	Propagation Delay, B to A	3.3	2.8	3.0	3.4	4.2	5.1	3.3	3.4	4.3	4.7	5.7	
		2.5	3.3	3.4	3.9	4.2	5.2	3.8	3.9	4.3	4.7	5.8	
		1.8	4.5	4.6	4.9	5.3	6.2	5.0	5.1	5.4	5.9	6.9	
		1.5	5.6	5.7	6.0	6.3	7.1	6.2	6.3	6.6	7.0	7.9	
		1.2	9.3	9.4	9.6	9.8	11.0	9.5	9.6	9.8	10	11.2	
t _{PZH} , t _{PZL}	Output Enable, OE to A	3.3	3.8	3.8	3.8	4.0	5.3	4.2	4.2	4.2	4.2	5.4	ns
		2.5	4.8	4.8	4.8	4.8	5.7	5.3	5.3	5.3	5.3	5.9	
		1.8	7.2	7.2	7.2	7.2	7.2	8.0	8.0	8.0	8.0	8.0	
		1.5	9.4	9.4	9.4	9.4	9.4	10.4	10.4	10.4	10.4	10.4	
		1.2	12.8	12.8	12.8	12.8	13.3	14.1	14.1	14.1	14.1	14.1	
	Output Enable, OE to B	3.3	3.8	4.7	6.8	8.7	11.3	4.2	5.2	7.5	9.6	12.4	
		2.5	4.0	4.8	7.0	8.8	11.3	4.4	5.3	7.7	9.7	12.4	
		1.8	4.6	5.3	7.4	9.2	11.7	5.1	5.9	8.2	10.2	12.9	
		1.5	5.6	5.8	7.7	9.6	12.1	6.2	6.4	8.5	10.6	13.3	
		1.2	7.7	7.9	8.9	10.0	13.5	8.5	8.7	9.8	11.0	14.7	

T30LMXT3V4T245

AC ELECTRICAL CHARACTERISTICS (Note 5)

Symbol	Parameter	V _{CCA} (V)	Max	Max	Max	Max	Max	Max	Max	Max	Max	Max	Max	Unit
t _{PHZ} , t _{PLZ}	Output Disable, OE to A	3.3	6.7	6.7	6.7	6.7	6.7	6.7	8.5	8.5	8.5	8.5	8.5	ns
		2.5	6.2	6.2	6.2	6.2	6.2	6.2	6.2	6.9	6.9	6.9	6.9	
		1.8	8.6	8.6	8.6	8.6	8.6	8.6	8.6	9.5	9.5	9.5	9.5	
		1.5	10.2	10.2	10.2	10.2	10.2	10.2	10.2	11.3	11.3	11.3	11.3	
		1.2	11.0	11.0	11.0	11.0	11.0	11.0	11.0	12.0	12.0	12.0	12.0	
	Output Disable, OE to B	3.3	6.2	5.2	7.4	7.8	8.3	6.9	5.8	7.7	8.2	9.0		
		2.5	6.4	6.2	6.9	7.4	8.8	7.1	6.9	7.6	8.4	10.1		
		1.8	8.1	8.2	8.7	9.1	9.5	9.0	9.1	9.6	10.1	10.5		
		1.5	9.3	8.8	9.9	10.3	9.6	10.3	10.4	10.9	11.4	10.6		
		1.2	10.2	10.4	10.9	11.3	12.4	11.3	11.5	12.0	12.5	13.7		

5. Propagation delays defined per Figure 3.

CAPACITANCE

Symbol	Parameter	Test Conditions	Typ (Note 4)	Unit
C _{IN}	Control Pin Input Capacitance	V _{CCA} = V _{CCB} = 3.3 V, V _I = 0 V or V _{CCA/B}	2.5	pF
C _{I/O}	I/O Pin Input Capacitance	V _{CCA} = V _{CCB} = 3.3 V, V _I = 0 V or V _{CCA/B}	5.0	pF
C _{PD} (Note 6)	Power Dissipation Capacitance	V _{CCA} = V _{CCB} = 3.3 V, V _I = 0 V or V _{CCA/B} , f = 10 MHz		pF
	A Port	A to B with output enabled or disabled	0.4	
		B to A with output disabled	0.7	
		B to A with output enabled	12	
	B Port	B to A with output enabled or disabled	0.4	
		A to B with output disabled	0.7	
A to B with output enabled		12		

6. C_{PD} is defined as the value of the IC's equivalent capacitance from which the operating current can be calculated from:
 $I_{CC(operating)} \cong C_{PD} \times V_{CC} \times f_{IN} \times N_{SW}$ where $I_{CC} = I_{CCA} + I_{CCB}$ and N_{SW} = total number of outputs switching.

T30LMXT3V4T245

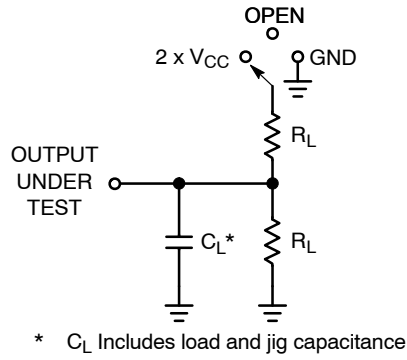


Figure 3. AC Test Circuit

Test	Switch Position	C_L	R_L
t_{PLH} , t_{PHL}	OPEN	15 pF	2 k Ω
t_{PLZ} , t_{PZL}	$2 \times V_{CC}$		
t_{PHZ} , t_{PZH}	GND		

C_L includes load and jig capacitance
Pulse generator $Z_O = 50 \Omega$
Input $f = 1.0 \text{ MHz}$; $t_W = 500 \text{ ns}$

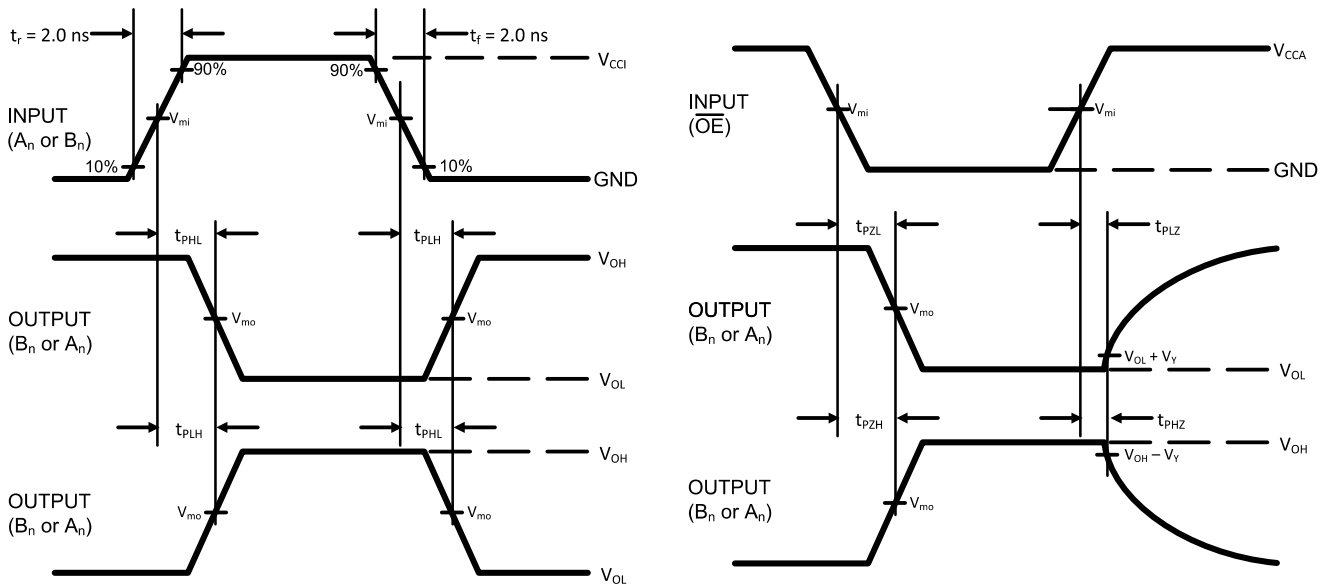


Figure 4. AC Waveforms

Symbol	V_{CC}				
	3.0 V – 3.6 V	2.3 V – 2.7 V	1.65 V – 1.95 V	1.4 V – 1.6 V	1.1 V – 1.3 V
V_{mi}	$V_{CC}/2$	$V_{CC}/2$	$V_{CC}/2$	$V_{CC}/2$	$V_{CC}/2$
V_{mo}	$V_{CC}/2$	$V_{CC}/2$	$V_{CC}/2$	$V_{CC}/2$	$V_{CC}/2$
V_Y	0.3 V	0.15 V	0.15 V	0.1 V	0.1 V

7. V_{CC1} is the V_{CC} associated with the input port.
8. V_{CC0} is the V_{CC} associated with the output port.

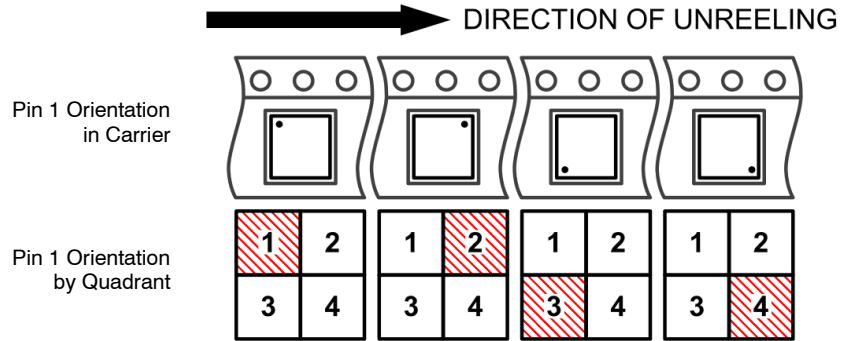
T30LMXT3V4T245

ORDERING INFORMATION

Order Number	Marking	Package	Pin 1 Quadrant	Shipping [†]
T30LMXT3V4T245MU2TAG	XA	UQFN16	1	3000 / Tape & Reel

[†] For information on tape and reel specifications, including part orientation and tape sizes, please refer to our Tape and Reel Packaging Specifications Brochure, [BRD8011/D](#).

Pin 1 Orientation in Tape and Reel

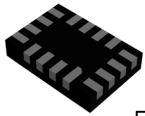


T30LMXT3V4T245

REVISION HISTORY

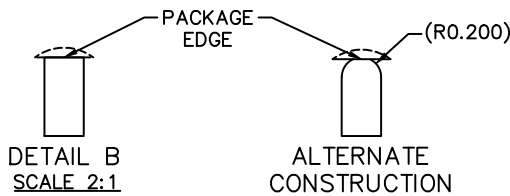
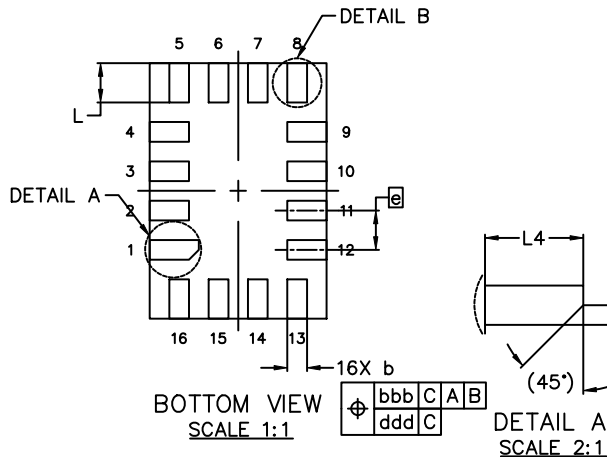
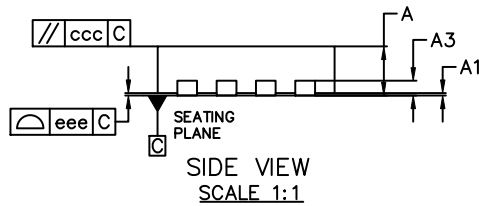
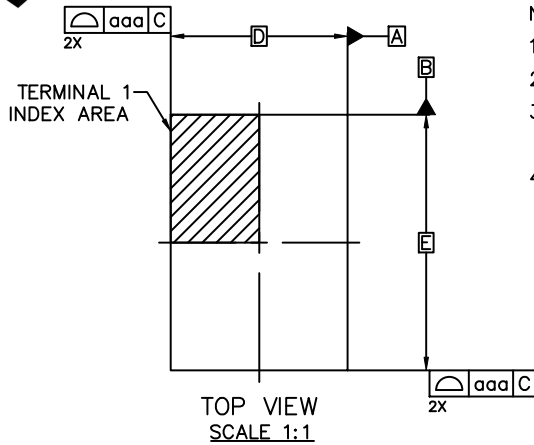
Revision	Description of Changes	Date
P5	UQFN16 Marking Diagram update (p.1), Ordering Information table update (p.10)	11/28/2025
P6	Removed all packages and OPNs except UQFN16 and updated values in AC Characteristics table.	12/16/2025
0	Initial release of datasheet.	12/18/2025
1	Added Junction Temperature spec and corrected errors in Thermal Resistance section of Maximum Ratings table.	3/11/2026

This document has undergone updates prior to the inclusion of this revision history table. The changes tracked here only reflect updates made on the noted approval dates.



UQFN-16 1.80x2.60x0.50, 0.40P
CASE 523BF
ISSUE B

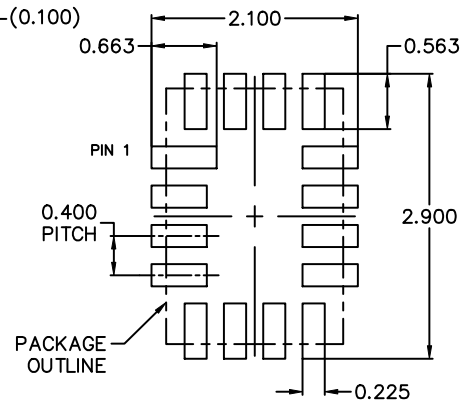
DATE 18 JUN 2026



NOTES:

1. DIMENSIONING AND TOLERANCING PER ASME Y14.5M, 2018.
2. ALL DIMENSIONS ARE IN MILLIMETERS, DEGREES IN ANGLE.
3. LAND PATTERN RECOMMENDATION IS EXISTING INDUSTRY LAND PATTERN.
4. TERMINAL SHAPE MAY VARY ACCORDING TO PACKAGE SUPPLIER, SEE TERMINAL SHAPE VARIANTS.

DIM	MILLIMETERS		
	MIN.	NOM.	MAX.
A	0.450	0.500	0.550
A1	0.000	0.025	0.050
A3	0.100	0.150	0.200
b	0.150	0.200	0.250
D	1.800 BSC		
E	2.600 BSC		
e	0.400 BSC		
L	0.350	0.400	0.450
L4	0.450	0.500	0.550
TOLERANCES FOR FEATURE CONTROL FRAME			
aaa	0.050		
bbb	0.100		
ccc	0.100		
ddd	0.050		
eee	0.050		



*FOR ADDITIONAL INFORMATION ON OUR Pb-FREE STRATEGY AND SOLDERING DETAILS, PLEASE DOWNLOAD THE ONSEMI SOLDERING AND MOUNTING TECHNIQUES REFERENCE MANUAL, SOLDERRM/D.

DOCUMENT NUMBER:	98AON13709G	Electronic versions are uncontrolled except when accessed directly from the Document Repository. Printed versions are uncontrolled except when stamped "CONTROLLED COPY" in red.
DESCRIPTION:	UQFN-16 1.80x2.60x0.50, 0.40P	PAGE 1 OF 1

onsemi and ONSEMI are trademarks of Semiconductor Components Industries, LLC dba onsemi or its subsidiaries in the United States and/or other countries. onsemi reserves the right to make changes without further notice to any products herein. onsemi makes no warranty, representation or guarantee regarding the suitability of its products for any particular purpose, nor does onsemi assume any liability arising out of the application or use of any product or circuit, and specifically disclaims any and all liability, including without limitation special, consequential or incidental damages. onsemi does not convey any license under its patent rights nor the rights of others.

onsemi, **Onsemi**, and other names, marks, and brands are registered and/or common law trademarks of Semiconductor Components Industries, LLC dba "**onsemi**" or its affiliates and/or subsidiaries in the United States and/or other countries. **onsemi** owns the rights to a number of patents, trademarks, copyrights, trade secrets, and other intellectual property. A listing of **onsemi**'s product/patent coverage may be accessed at www.onsemi.com/site/pdf/Patent-Marking.pdf. **onsemi** reserves the right to make changes at any time to any products or information herein, without notice. The information herein is provided "as-is" and **onsemi** makes no warranty, representation or guarantee regarding the accuracy of the information, product features, availability, functionality, or suitability of its products for any particular purpose, nor does **onsemi** assume any liability arising out of the application or use of any product or circuit, and specifically disclaims any and all liability, including without limitation special, consequential or incidental damages. Buyer is responsible for its products and applications using **onsemi** products, including compliance with all laws, regulations and safety requirements or standards, regardless of any support or applications information provided by **onsemi**. "Typical" parameters which may be provided in **onsemi** data sheets and/or specifications can and do vary in different applications and actual performance may vary over time. All operating parameters, including "Typicals" must be validated for each customer application by customer's technical experts. **onsemi** does not convey any license under any of its intellectual property rights nor the rights of others. **onsemi** products are not designed, intended, or authorized for use as a critical component in life support systems or any FDA Class 3 medical devices or medical devices with a same or similar classification in a foreign jurisdiction or any devices intended for implantation in the human body. Should Buyer purchase or use **onsemi** products for any such unintended or unauthorized application, Buyer shall indemnify and hold **onsemi** and its officers, employees, subsidiaries, affiliates, and distributors harmless against all claims, costs, damages, and expenses, and reasonable attorney fees arising out of, directly or indirectly, any claim of personal injury or death associated with such unintended or unauthorized use, even if such claim alleges that **onsemi** was negligent regarding the design or manufacture of the part. **onsemi** is an Equal Opportunity/Affirmative Action Employer. This literature is subject to all applicable copyright laws and is not for resale in any manner.

ADDITIONAL INFORMATION

TECHNICAL PUBLICATIONS:

Technical Library: www.onsemi.com/design/resources/technical-documentation
onsemi Website: www.onsemi.com

ONLINE SUPPORT: www.onsemi.com/support

For additional information, please contact your local Sales Representative at www.onsemi.com/support/sales