

MECHANICAL CASE OUTLINE

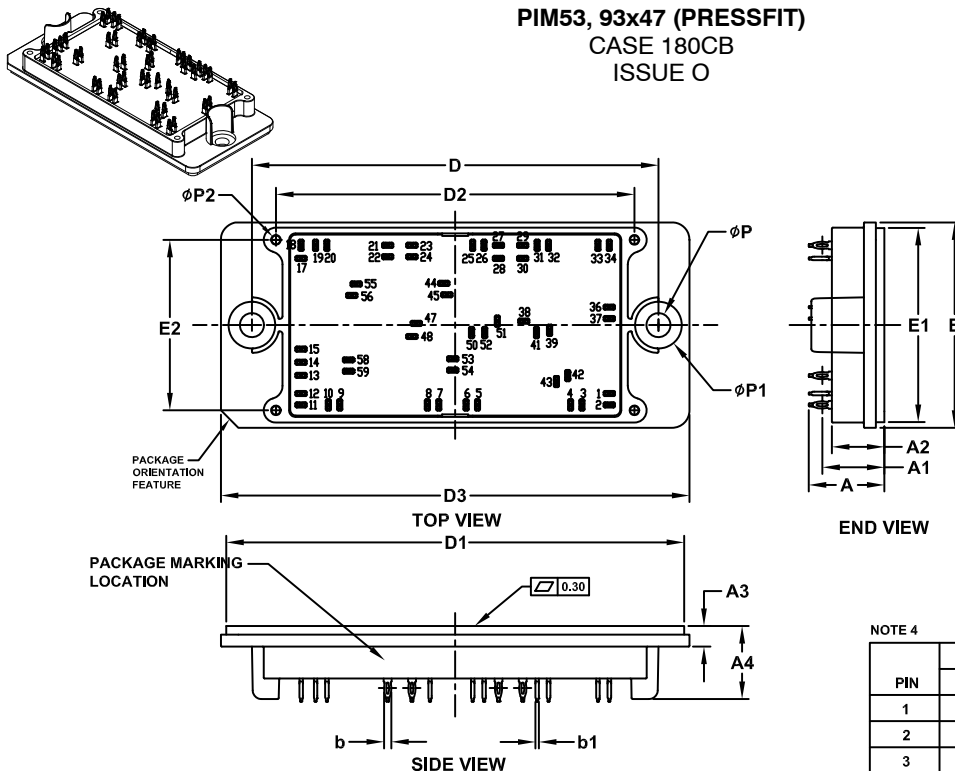
PACKAGE DIMENSIONS

ON Semiconductor®

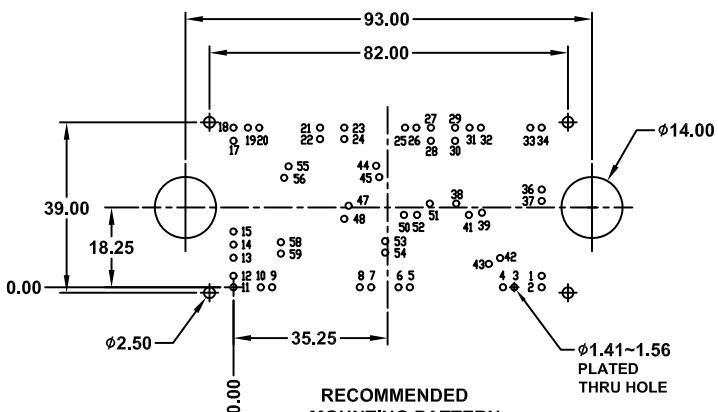


PIM53, 93x47 (PRESSFIT) CASE 180CB ISSUE O

DATE 30 APR 2020



| DIM | MILLIMETERS | | |
|-----|-------------|--------|--------|
| | MIN. | NOM. | MAX. |
| A | 16.90 | 17.30 | 17.70 |
| A1 | 13.97 | 14.18 | 14.39 |
| A2 | 11.70 | 12.00 | 12.30 |
| A3 | 4.40 | 4.70 | 5.00 |
| A4 | 16.40 | 16.70 | 17.00 |
| b | 1.61 | 1.66 | 1.71 |
| b1 | 0.75 | 0.80 | 0.85 |
| D | 92.90 | 93.00 | 93.10 |
| D1 | 104.45 | 104.75 | 105.05 |
| D2 | 81.80 | 82.00 | 82.20 |
| D3 | 106.90 | 107.20 | 107.50 |
| E | 46.70 | 47.00 | 47.30 |
| E1 | 44.10 | 44.40 | 44.70 |
| E2 | 38.80 | 39.00 | 39.20 |
| P | 5.40 | 5.50 | 5.60 |
| P1 | 10.60 | 10.70 | 10.80 |
| P2 | 1.80 | 2.00 | 2.20 |

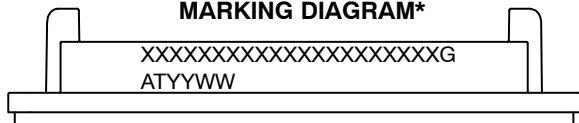


- NOTES:
1. DIMENSIONING AND TOLERANCING PER ASME Y14.5M, 2009
 2. CONTROLLING DIMENSION : MILLIMETERS
 3. DIMENSIONS b AND b1 APPLY TO THE PLATED TERMINALS AND ARE MEASURED AT DIMENSION A1
 4. PIN POSITION TOLERANCE IS ± 0.4mm
 5. PACKAGE MARKING IS LOCATED AS SHOWN ON THE SIDE OPPOSITE THE PACKAGE ORIENTATION FEATURES

NOTE 4

| PIN | PIN POSITION | | PIN | PIN POSITION | |
|-----|--------------|-------|-----|--------------|-------|
| | X | Y | | X | Y |
| 1 | 70.50 | 2.60 | 29 | 50.70 | 36.50 |
| 2 | 70.50 | 0.00 | 30 | 50.70 | 33.50 |
| 3 | 64.25 | 0.00 | 31 | 54.00 | 36.50 |
| 4 | 61.65 | 0.00 | 32 | 56.60 | 36.50 |
| 5 | 40.35 | 0.00 | 33 | 67.90 | 36.50 |
| 6 | 37.75 | 0.00 | 34 | 70.50 | 36.50 |
| 7 | 31.50 | 0.00 | 36 | 70.50 | 22.35 |
| 8 | 28.90 | 0.00 | 37 | 70.50 | 19.75 |
| 9 | 8.85 | 0.00 | 38 | 50.95 | 19.15 |
| 10 | 6.25 | 0.00 | 39 | 56.85 | 17.05 |
| 11 | 0.00 | 0.00 | 41 | 53.85 | 16.55 |
| 12 | 0.00 | 2.60 | 42 | 61.00 | 6.70 |
| 13 | 0.00 | 6.75 | 43 | 58.40 | 5.35 |
| 14 | 0.00 | 9.75 | 44 | 32.65 | 27.80 |
| 15 | 0.00 | 12.75 | 45 | 33.35 | 25.20 |
| 17 | 0.00 | 33.50 | 47 | 26.35 | 18.65 |
| 18 | 0.00 | 36.50 | 48 | 25.35 | 15.65 |
| 19 | 3.30 | 36.50 | 50 | 39.00 | 16.55 |
| 20 | 5.90 | 36.50 | 51 | 44.90 | 19.15 |
| 21 | 19.80 | 36.50 | 52 | 42.00 | 16.55 |
| 22 | 19.80 | 33.90 | 53 | 34.70 | 10.55 |
| 23 | 25.35 | 36.50 | 54 | 34.70 | 7.95 |
| 24 | 25.35 | 33.90 | 55 | 12.60 | 27.65 |
| 25 | 39.25 | 36.50 | 56 | 11.60 | 25.05 |
| 26 | 41.85 | 36.50 | 58 | 10.85 | 10.30 |
| 27 | 45.15 | 36.50 | 59 | 10.85 | 7.70 |
| 28 | 45.15 | 33.50 | | | |

GENERIC MARKING DIAGRAM*



XXXXX = Specific Device Code
 G = Pb-Free Package
 AT = Assembly & Test Site Code
 YYWW = Year and Work Week Code

*This information is generic. Please refer to device data sheet for actual part marking. Pb-Free indicator, "G" or microdot "▪", may or may not be present. Some products may not follow the Generic Marking.

| | | |
|------------------|-------------------------|--|
| DOCUMENT NUMBER: | 98AON20720H | Electronic versions are uncontrolled except when accessed directly from the Document Repository. Printed versions are uncontrolled except when stamped "CONTROLLED COPY" in red. |
| DESCRIPTION: | PIM53 93X47 (PRESS FIT) | PAGE 1 OF 1 |

ON Semiconductor and ON are trademarks of Semiconductor Components Industries, LLC dba ON Semiconductor or its subsidiaries in the United States and/or other countries. ON Semiconductor reserves the right to make changes without further notice to any products herein. ON Semiconductor makes no warranty, representation or guarantee regarding the suitability of its products for any particular purpose, nor does ON Semiconductor assume any liability arising out of the application or use of any product or circuit, and specifically disclaims any and all liability, including without limitation special, consequential or incidental damages. ON Semiconductor does not convey any license under its patent rights nor the rights of others.